



Demographic and Income Comparison Profile

44668-Gateway Market
 7751 9th St N
 Rings: 1, 3, 5 mile radii

Property Capsule 1
 Latitude: 27.84350
 Longitude: -82.64688

	1 mile	3 miles	5 miles
Census 2010 Summary			
Population	17,472	89,551	195,198
Households	8,040	42,557	89,068
Families	4,296	21,588	47,126
Average Household Size	2.15	2.08	2.15
Owner Occupied Housing Units	5,020	25,257	54,982
Renter Occupied Housing Units	3,020	17,300	34,086
Median Age	42.8	42.1	42.0
2019 Summary			
Population	18,014	96,394	209,107
Households	8,162	45,316	94,472
Families	4,333	22,604	49,109
Average Household Size	2.18	2.10	2.17
Owner Occupied Housing Units	5,059	25,769	56,254
Renter Occupied Housing Units	3,102	19,547	38,218
Median Age	45.0	44.5	44.3
Median Household Income	\$51,334	\$51,588	\$53,171
Average Household Income	\$64,406	\$70,515	\$74,247
2024 Summary			
Population	18,382	100,051	217,386
Households	8,305	46,946	98,198
Families	4,402	23,293	50,630
Average Household Size	2.19	2.10	2.18
Owner Occupied Housing Units	5,257	27,078	59,055
Renter Occupied Housing Units	3,048	19,868	39,143
Median Age	45.3	45.1	44.8
Median Household Income	\$56,841	\$58,356	\$60,215
Average Household Income	\$74,747	\$82,132	\$85,867
Trends: 2019-2024 Annual Rate			
Population	0.41%	0.75%	0.78%
Households	0.35%	0.71%	0.78%
Families	0.32%	0.60%	0.61%
Owner Households	0.77%	1.00%	0.98%
Median Household Income	2.06%	2.50%	2.52%

Source: U.S. Census Bureau, Census 2010 Summary File 1. Esri forecasts for 2019 and 2024.



Demographic and Income Comparison Profile

44668-Gateway Market
 7751 9th St N
 Rings: 1, 3, 5 mile radii

Property Capsule 1
 Latitude: 27.84350
 Longitude: -82.64688

2019 Households by Income	1 mile		3 miles		5 miles	
	Number	Percent	Number	Percent	Number	Percent
<\$15,000	862	10.6%	4,770	10.5%	10,296	10.9%
\$15,000 - \$24,999	836	10.2%	4,940	10.9%	10,044	10.6%
\$25,000 - \$34,999	901	11.0%	4,894	10.8%	9,812	10.4%
\$35,000 - \$49,999	1,335	16.4%	7,210	15.9%	13,786	14.6%
\$50,000 - \$74,999	1,772	21.7%	8,880	19.6%	18,149	19.2%
\$75,000 - \$99,999	1,116	13.7%	5,953	13.1%	12,420	13.1%
\$100,000 - \$149,999	951	11.7%	5,232	11.5%	11,326	12.0%
\$150,000 - \$199,999	214	2.6%	1,544	3.4%	4,150	4.4%
\$200,000+	174	2.1%	1,894	4.2%	4,488	4.8%
Median Household Income	\$51,334		\$51,588		\$53,171	
Average Household Income	\$64,406		\$70,515		\$74,247	
Per Capita Income	\$29,413		\$33,166		\$33,548	

2024 Households by Income	1 mile		3 miles		5 miles	
	Number	Percent	Number	Percent	Number	Percent
<\$15,000	682	8.2%	3,914	8.3%	8,736	8.9%
\$15,000 - \$24,999	680	8.2%	4,191	8.9%	8,605	8.8%
\$25,000 - \$34,999	789	9.5%	4,364	9.3%	8,801	9.0%
\$35,000 - \$49,999	1,309	15.8%	6,966	14.8%	13,356	13.6%
\$50,000 - \$74,999	1,870	22.5%	9,372	20.0%	18,938	19.3%
\$75,000 - \$99,999	1,259	15.2%	6,832	14.6%	14,126	14.4%
\$100,000 - \$149,999	1,159	14.0%	6,592	14.0%	13,989	14.2%
\$150,000 - \$199,999	319	3.8%	2,278	4.9%	6,025	6.1%
\$200,000+	238	2.9%	2,438	5.2%	5,621	5.7%
Median Household Income	\$56,841		\$58,356		\$60,215	
Average Household Income	\$74,747		\$82,132		\$85,867	
Per Capita Income	\$34,036		\$38,548		\$38,788	

Data Note: Income is expressed in current dollars.

Source: U.S. Census Bureau, Census 2010 Summary File 1. Esri forecasts for 2019 and 2024.



Demographic and Income Comparison Profile

44668-Gateway Market
 7751 9th St N
 Rings: 1, 3, 5 mile radii

Property Capsule 1
 Latitude: 27.84350
 Longitude: -82.64688

2010 Population by Age	1 mile		3 miles		5 miles	
	Number	Percent	Number	Percent	Number	Percent
Age 0 - 4	937	5.4%	4,780	5.3%	10,315	5.3%
Age 5 - 9	854	4.9%	4,176	4.7%	9,727	5.0%
Age 10 - 14	891	5.1%	4,169	4.7%	9,811	5.0%
Age 15 - 19	921	5.3%	4,233	4.7%	9,922	5.1%
Age 20 - 24	1,029	5.9%	5,406	6.0%	11,052	5.7%
Age 25 - 34	2,291	13.1%	13,460	15.0%	27,784	14.2%
Age 35 - 44	2,337	13.4%	12,048	13.5%	27,560	14.1%
Age 45 - 54	2,847	16.3%	13,871	15.5%	32,092	16.4%
Age 55 - 64	2,455	14.0%	11,801	13.2%	26,194	13.4%
Age 65 - 74	1,474	8.4%	7,798	8.7%	15,916	8.2%
Age 75 - 84	1,023	5.9%	5,458	6.1%	10,243	5.2%
Age 85+	414	2.4%	2,350	2.6%	4,582	2.3%

2019 Population by Age	1 mile		3 miles		5 miles	
	Number	Percent	Number	Percent	Number	Percent
Age 0 - 4	854	4.7%	4,523	4.7%	9,808	4.7%
Age 5 - 9	857	4.8%	4,404	4.6%	9,775	4.7%
Age 10 - 14	862	4.8%	4,389	4.6%	10,021	4.8%
Age 15 - 19	814	4.5%	4,148	4.3%	9,519	4.6%
Age 20 - 24	1,019	5.7%	5,625	5.8%	11,805	5.6%
Age 25 - 34	2,410	13.4%	13,268	13.8%	28,256	13.5%
Age 35 - 44	2,184	12.1%	12,472	12.9%	27,118	13.0%
Age 45 - 54	2,371	13.2%	12,438	12.9%	28,718	13.7%
Age 55 - 64	2,825	15.7%	14,051	14.6%	31,635	15.1%
Age 65 - 74	2,223	12.3%	11,545	12.0%	24,245	11.6%
Age 75 - 84	1,090	6.1%	6,341	6.6%	12,371	5.9%
Age 85+	506	2.8%	3,188	3.3%	5,836	2.8%

2024 Population by Age	1 mile		3 miles		5 miles	
	Number	Percent	Number	Percent	Number	Percent
Age 0 - 4	877	4.8%	4,702	4.7%	10,287	4.7%
Age 5 - 9	850	4.6%	4,414	4.4%	9,957	4.6%
Age 10 - 14	858	4.7%	4,444	4.4%	10,152	4.7%
Age 15 - 19	845	4.6%	4,443	4.4%	10,016	4.6%
Age 20 - 24	1,001	5.4%	5,899	5.9%	11,941	5.5%
Age 25 - 34	2,489	13.5%	13,754	13.7%	29,630	13.6%
Age 35 - 44	2,202	12.0%	12,308	12.3%	27,370	12.6%
Age 45 - 54	2,208	12.0%	11,914	11.9%	27,164	12.5%
Age 55 - 64	2,675	14.6%	13,773	13.8%	31,061	14.3%
Age 65 - 74	2,481	13.5%	12,953	12.9%	27,729	12.8%
Age 75 - 84	1,406	7.6%	8,078	8.1%	15,990	7.4%
Age 85+	488	2.7%	3,367	3.4%	6,089	2.8%

Source: U.S. Census Bureau, Census 2010 Summary File 1. Esri forecasts for 2019 and 2024.



Demographic and Income Comparison Profile

44668-Gateway Market
 7751 9th St N
 Rings: 1, 3, 5 mile radii

Property Capsule 1
 Latitude: 27.84350
 Longitude: -82.64688

2010 Race and Ethnicity	1 mile		3 miles		5 miles	
	Number	Percent	Number	Percent	Number	Percent
White Alone	14,648	83.8%	74,826	83.6%	161,154	82.6%
Black Alone	1,288	7.4%	6,414	7.2%	13,652	7.0%
American Indian Alone	56	0.3%	272	0.3%	640	0.3%
Asian Alone	681	3.9%	3,926	4.4%	10,526	5.4%
Pacific Islander Alone	11	0.1%	57	0.1%	185	0.1%
Some Other Race Alone	321	1.8%	1,718	1.9%	3,919	2.0%
Two or More Races	468	2.7%	2,338	2.6%	5,121	2.6%
Hispanic Origin (Any Race)	1,441	8.2%	7,466	8.3%	17,131	8.8%

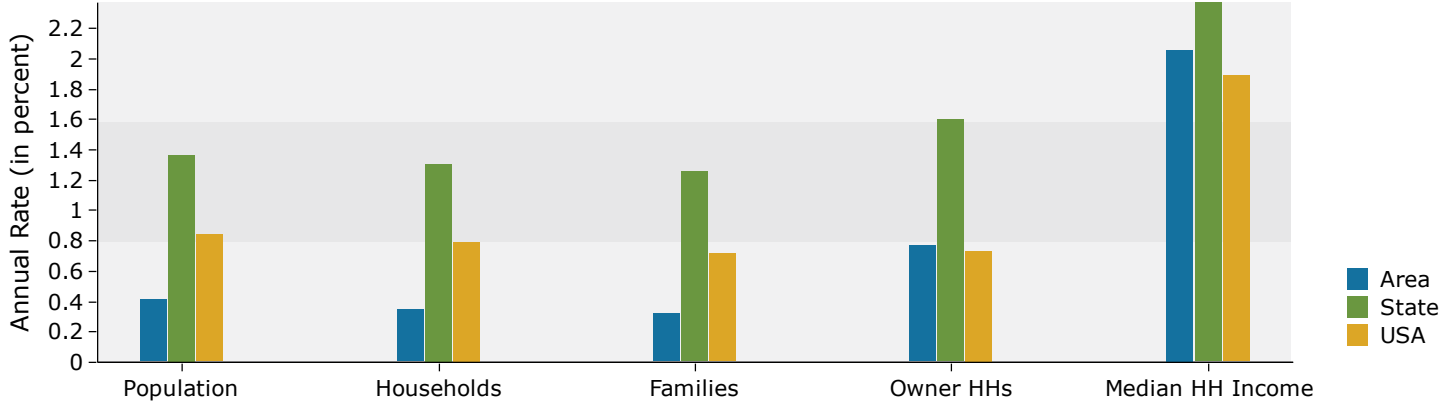
2019 Race and Ethnicity	1 mile		3 miles		5 miles	
	Number	Percent	Number	Percent	Number	Percent
White Alone	14,665	81.4%	77,969	80.9%	166,562	79.7%
Black Alone	1,401	7.8%	7,418	7.7%	16,002	7.7%
American Indian Alone	58	0.3%	289	0.3%	698	0.3%
Asian Alone	854	4.7%	5,087	5.3%	13,383	6.4%
Pacific Islander Alone	11	0.1%	62	0.1%	187	0.1%
Some Other Race Alone	413	2.3%	2,365	2.5%	5,320	2.5%
Two or More Races	612	3.4%	3,204	3.3%	6,955	3.3%
Hispanic Origin (Any Race)	1,913	10.6%	10,464	10.9%	23,655	11.3%

2024 Race and Ethnicity	1 mile		3 miles		5 miles	
	Number	Percent	Number	Percent	Number	Percent
White Alone	14,654	79.7%	79,113	79.1%	168,877	77.7%
Black Alone	1,490	8.1%	8,071	8.1%	17,636	8.1%
American Indian Alone	59	0.3%	301	0.3%	741	0.3%
Asian Alone	976	5.3%	5,865	5.9%	15,333	7.1%
Pacific Islander Alone	12	0.1%	68	0.1%	202	0.1%
Some Other Race Alone	488	2.7%	2,876	2.9%	6,438	3.0%
Two or More Races	703	3.8%	3,756	3.8%	8,158	3.8%
Hispanic Origin (Any Race)	2,280	12.4%	12,741	12.7%	28,690	13.2%

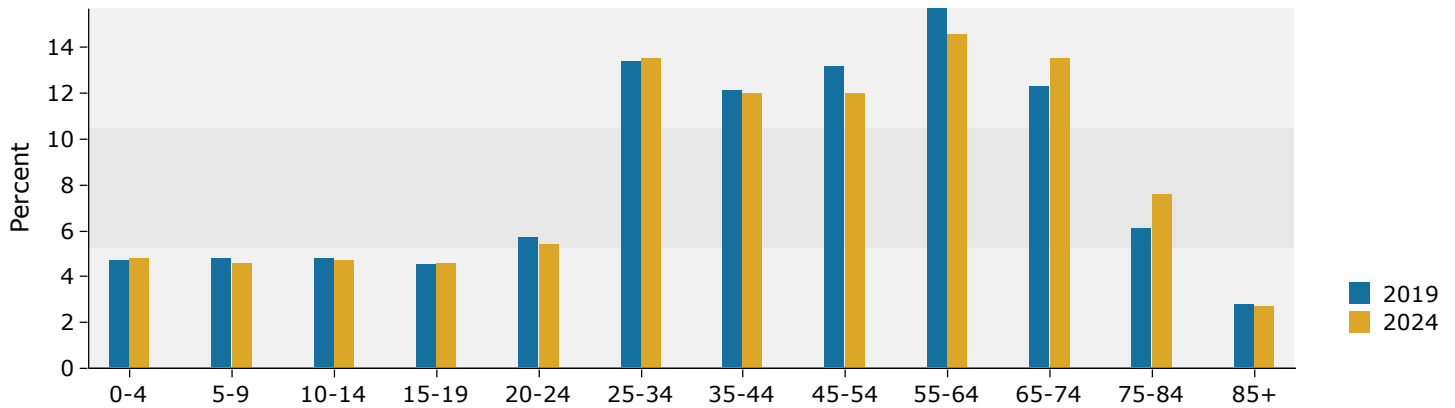
Source: U.S. Census Bureau, Census 2010 Summary File 1. Esri forecasts for 2019 and 2024.

1 mile

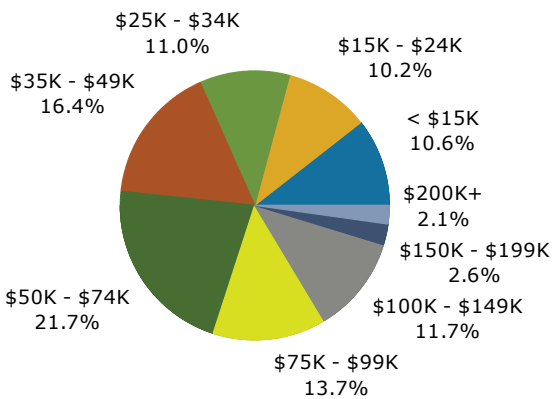
Trends 2019-2024



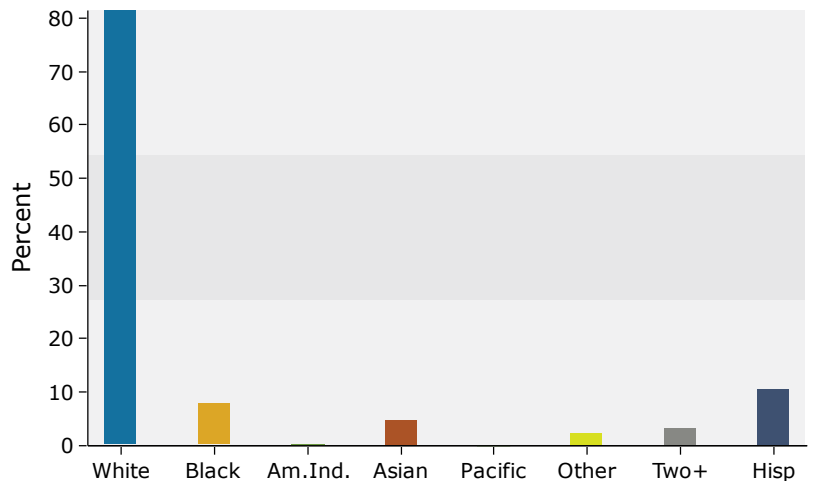
Population by Age



2019 Household Income



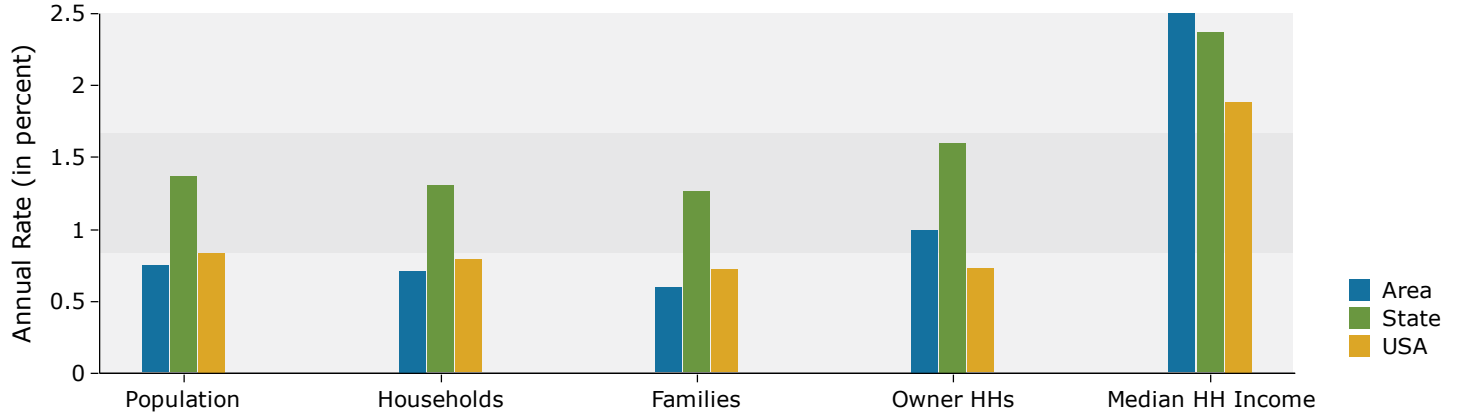
2019 Population by Race



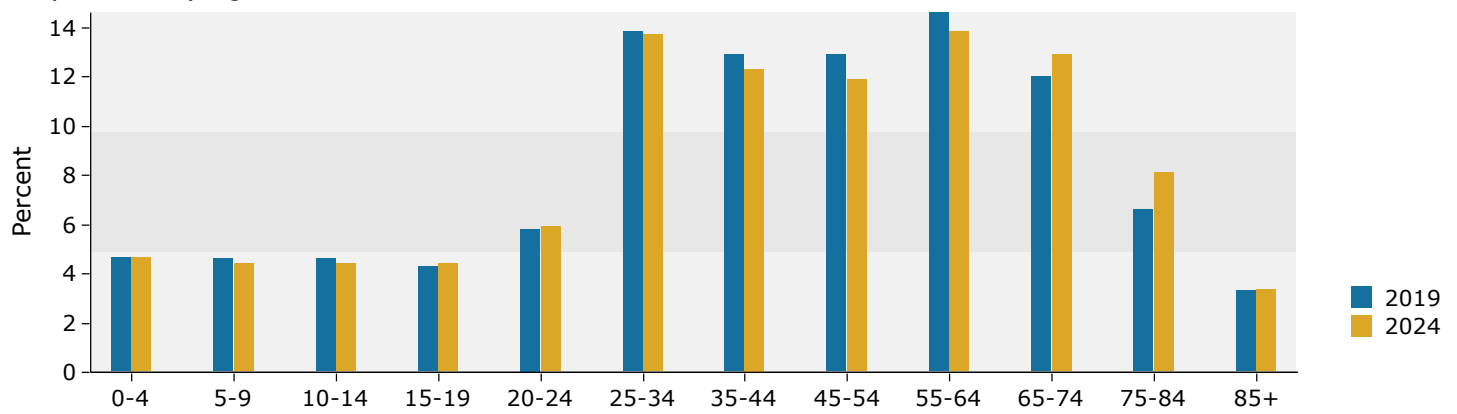
Source: U.S. Census Bureau, Census 2010 Summary File 1. Esri forecasts for 2019 and 2024.

3 miles

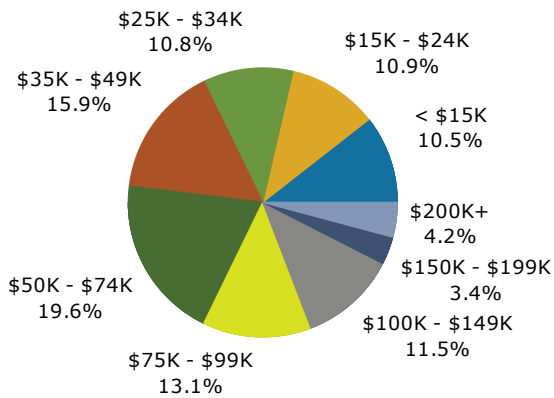
Trends 2019-2024



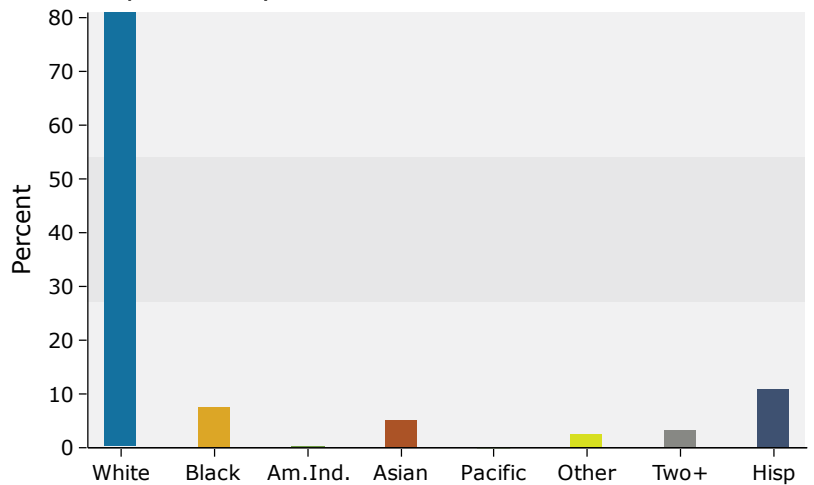
Population by Age



2019 Household Income



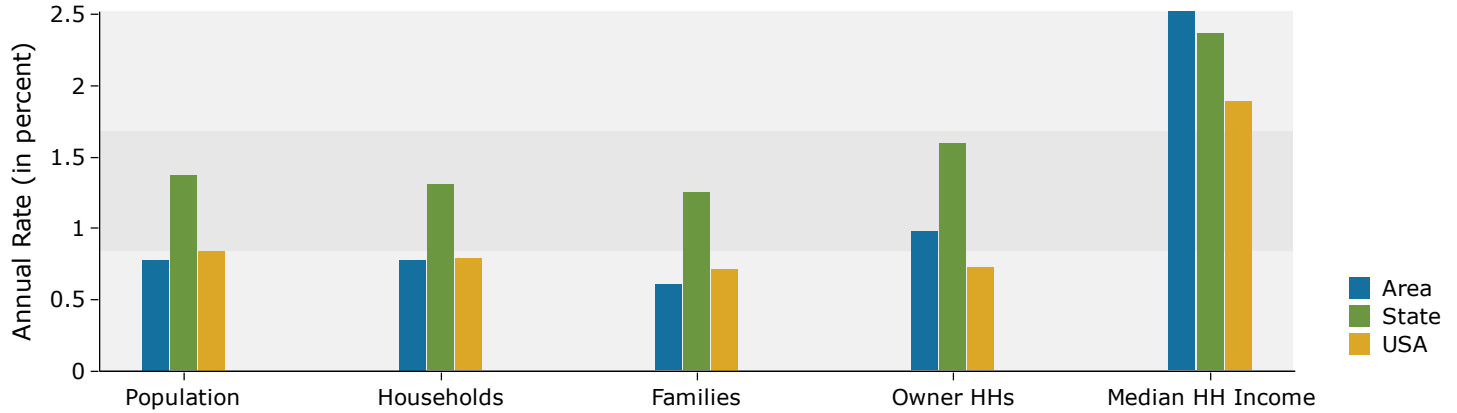
2019 Population by Race



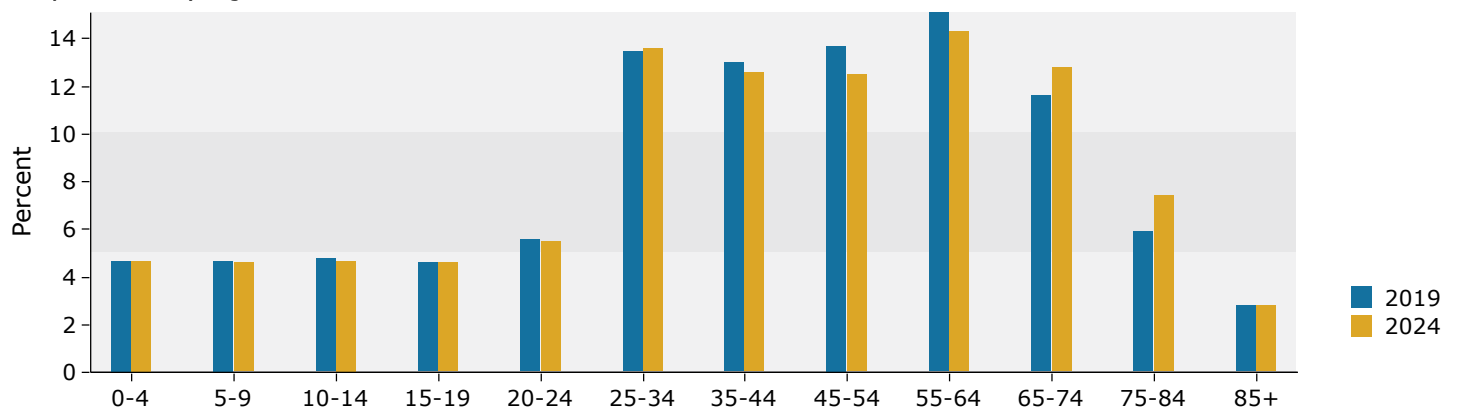
Source: U.S. Census Bureau, Census 2010 Summary File 1. Esri forecasts for 2019 and 2024.

5 miles

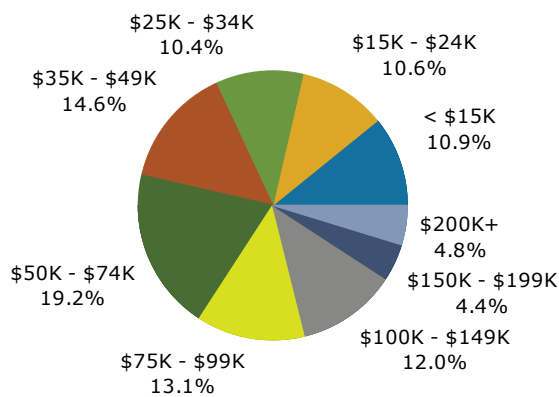
Trends 2019-2024



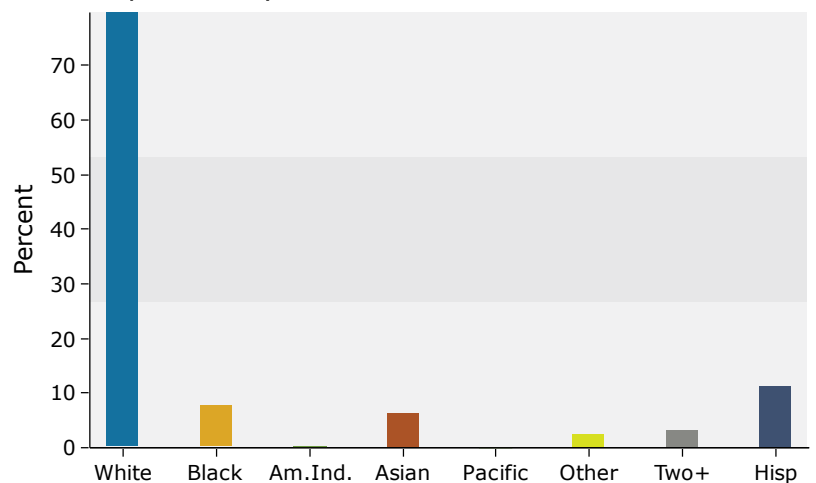
Population by Age



2019 Household Income



2019 Population by Race



Source: U.S. Census Bureau, Census 2010 Summary File 1. Esri forecasts for 2019 and 2024.