



# Demographic and Income Comparison Profile

40118-The Highlands of Flower Mound  
 6101 Long Prairie Rd  
 Rings: 1, 3, 5 mile radii

Prepared by Esri  
 Latitude: 33.06911  
 Longitude: -97.08264

	1 mile	3 miles	5 miles
<b>Census 2010 Summary</b>			
Population	5,580	63,054	149,389
Households	1,844	20,918	50,708
Families	1,583	17,899	40,926
Average Household Size	3.01	3.01	2.94
Owner Occupied Housing Units	1,638	18,773	41,596
Renter Occupied Housing Units	206	2,145	9,112
Median Age	38.6	38.1	36.7
<b>2019 Summary</b>			
Population	7,316	74,362	174,745
Households	2,427	24,674	59,109
Families	2,065	20,866	47,048
Average Household Size	3.00	3.01	2.95
Owner Occupied Housing Units	2,011	21,334	47,049
Renter Occupied Housing Units	415	3,340	12,060
Median Age	40.7	39.4	38.1
Median Household Income	\$140,536	\$123,428	\$108,013
Average Household Income	\$170,972	\$155,105	\$137,339
<b>2024 Summary</b>			
Population	8,352	81,164	191,815
Households	2,777	26,866	64,767
Families	2,353	22,626	51,284
Average Household Size	2.99	3.02	2.96
Owner Occupied Housing Units	2,294	23,139	51,121
Renter Occupied Housing Units	483	3,727	13,646
Median Age	42.4	40.1	38.9
Median Household Income	\$144,467	\$129,782	\$113,655
Average Household Income	\$178,837	\$165,972	\$148,155
<b>Trends: 2019-2024 Annual Rate</b>			
Population	2.68%	1.77%	1.88%
Households	2.73%	1.72%	1.85%
Families	2.65%	1.63%	1.74%
Owner Households	2.67%	1.64%	1.67%
Median Household Income	0.55%	1.01%	1.02%

Source: U.S. Census Bureau, Census 2010 Summary File 1. Esri forecasts for 2019 and 2024.



# Demographic and Income Comparison Profile

40118-The Highlands of Flower Mound  
 6101 Long Prairie Rd  
 Rings: 1, 3, 5 mile radii

Prepared by Esri  
 Latitude: 33.06911  
 Longitude: -97.08264

2019 Households by Income	1 mile		3 miles		5 miles	
	Number	Percent	Number	Percent	Number	Percent
<\$15,000	60	2.5%	384	1.6%	1,441	2.4%
\$15,000 - \$24,999	40	1.6%	427	1.7%	1,940	3.3%
\$25,000 - \$34,999	38	1.6%	556	2.3%	2,523	4.3%
\$35,000 - \$49,999	135	5.6%	1,502	6.1%	4,828	8.2%
\$50,000 - \$74,999	237	9.8%	2,745	11.1%	7,766	13.1%
\$75,000 - \$99,999	254	10.5%	3,265	13.2%	7,882	13.3%
\$100,000 - \$149,999	520	21.4%	5,981	24.2%	13,593	23.0%
\$150,000 - \$199,999	470	19.4%	4,430	18.0%	8,764	14.8%
\$200,000+	672	27.7%	5,383	21.8%	10,372	17.5%
Median Household Income	\$140,536		\$123,428		\$108,013	
Average Household Income	\$170,972		\$155,105		\$137,339	
Per Capita Income	\$55,109		\$51,417		\$46,469	

2024 Households by Income	Number		Percent		Number		Percent	
	Number	Percent	Number	Percent	Number	Percent	Number	Percent
<\$15,000	65	2.3%	373	1.4%	1,329	2.1%	1,329	2.1%
\$15,000 - \$24,999	42	1.5%	399	1.5%	1,751	2.7%	1,751	2.7%
\$25,000 - \$34,999	40	1.4%	523	1.9%	2,418	3.7%	2,418	3.7%
\$35,000 - \$49,999	145	5.2%	1,451	5.4%	4,778	7.4%	4,778	7.4%
\$50,000 - \$74,999	267	9.6%	2,752	10.2%	8,072	12.5%	8,072	12.5%
\$75,000 - \$99,999	279	10.0%	3,325	12.4%	8,277	12.8%	8,277	12.8%
\$100,000 - \$149,999	596	21.5%	6,641	24.7%	15,430	23.8%	15,430	23.8%
\$150,000 - \$199,999	573	20.6%	5,280	19.7%	10,690	16.5%	10,690	16.5%
\$200,000+	768	27.7%	6,123	22.8%	12,021	18.6%	12,021	18.6%
Median Household Income	\$144,467		\$129,782		\$113,655		\$113,655	
Average Household Income	\$178,837		\$165,972		\$148,155		\$148,155	
Per Capita Income	\$57,547		\$54,869		\$50,037		\$50,037	

**Data Note:** Income is expressed in current dollars.

**Source:** U.S. Census Bureau, Census 2010 Summary File 1. Esri forecasts for 2019 and 2024.



# Demographic and Income Comparison Profile

40118-The Highlands of Flower Mound  
 6101 Long Prairie Rd  
 Rings: 1, 3, 5 mile radii

Prepared by Esri  
 Latitude: 33.06911  
 Longitude: -97.08264

2010 Population by Age	1 mile		3 miles		5 miles	
	Number	Percent	Number	Percent	Number	Percent
Age 0 - 4	322	5.8%	3,916	6.2%	10,150	6.8%
Age 5 - 9	530	9.5%	5,753	9.1%	13,121	8.8%
Age 10 - 14	621	11.1%	6,352	10.1%	13,872	9.3%
Age 15 - 19	449	8.0%	4,914	7.8%	11,383	7.6%
Age 20 - 24	192	3.4%	2,205	3.5%	6,459	4.3%
Age 25 - 34	350	6.3%	5,210	8.3%	15,596	10.4%
Age 35 - 44	1,019	18.3%	11,404	18.1%	26,106	17.5%
Age 45 - 54	1,125	20.2%	12,146	19.3%	26,768	17.9%
Age 55 - 64	583	10.4%	6,899	10.9%	15,219	10.2%
Age 65 - 74	205	3.7%	2,799	4.4%	6,750	4.5%
Age 75 - 84	111	2.0%	1,064	1.7%	2,843	1.9%
Age 85+	73	1.3%	393	0.6%	1,123	0.8%

2019 Population by Age	1 mile		3 miles		5 miles	
	Number	Percent	Number	Percent	Number	Percent
Age 0 - 4	369	5.0%	4,191	5.6%	10,614	6.1%
Age 5 - 9	475	6.5%	5,403	7.3%	12,797	7.3%
Age 10 - 14	611	8.3%	6,213	8.4%	14,416	8.2%
Age 15 - 19	628	8.6%	5,506	7.4%	12,578	7.2%
Age 20 - 24	402	5.5%	3,534	4.8%	8,982	5.1%
Age 25 - 34	778	10.6%	7,899	10.6%	20,446	11.7%
Age 35 - 44	765	10.5%	10,337	13.9%	24,598	14.1%
Age 45 - 54	1,317	18.0%	12,252	16.5%	27,632	15.8%
Age 55 - 64	1,156	15.8%	10,800	14.5%	23,670	13.5%
Age 65 - 74	553	7.6%	5,792	7.8%	12,812	7.3%
Age 75 - 84	173	2.4%	1,877	2.5%	4,633	2.7%
Age 85+	91	1.2%	557	0.7%	1,564	0.9%

2024 Population by Age	1 mile		3 miles		5 miles	
	Number	Percent	Number	Percent	Number	Percent
Age 0 - 4	414	5.0%	4,628	5.7%	11,696	6.1%
Age 5 - 9	485	5.8%	5,636	6.9%	13,376	7.0%
Age 10 - 14	605	7.2%	6,295	7.8%	14,816	7.7%
Age 15 - 19	603	7.2%	5,510	6.8%	13,289	6.9%
Age 20 - 24	374	4.5%	3,229	4.0%	8,738	4.6%
Age 25 - 34	918	11.0%	8,985	11.1%	22,980	12.0%
Age 35 - 44	1,015	12.2%	12,223	15.1%	28,174	14.7%
Age 45 - 54	1,256	15.0%	11,737	14.5%	27,192	14.2%
Age 55 - 64	1,406	16.8%	11,483	14.1%	25,799	13.4%
Age 65 - 74	841	10.1%	7,634	9.4%	16,652	8.7%
Age 75 - 84	334	4.0%	3,095	3.8%	7,183	3.7%
Age 85+	102	1.2%	710	0.9%	1,921	1.0%

Source: U.S. Census Bureau, Census 2010 Summary File 1. Esri forecasts for 2019 and 2024.



# Demographic and Income Comparison Profile

40118-The Highlands of Flower Mound  
 6101 Long Prairie Rd  
 Rings: 1, 3, 5 mile radii

Prepared by Esri  
 Latitude: 33.06911  
 Longitude: -97.08264

2010 Race and Ethnicity	1 mile		3 miles		5 miles	
	Number	Percent	Number	Percent	Number	Percent
White Alone	4,815	86.3%	53,940	85.5%	121,025	81.0%
Black Alone	205	3.7%	2,366	3.8%	7,393	4.9%
American Indian Alone	34	0.6%	377	0.6%	893	0.6%
Asian Alone	292	5.2%	3,920	6.2%	9,517	6.4%
Pacific Islander Alone	3	0.1%	43	0.1%	100	0.1%
Some Other Race Alone	116	2.1%	1,079	1.7%	6,819	4.6%
Two or More Races	116	2.1%	1,329	2.1%	3,641	2.4%
Hispanic Origin (Any Race)	450	8.1%	5,362	8.5%	21,030	14.1%

2019 Race and Ethnicity	1 mile		3 miles		5 miles	
	Number	Percent	Number	Percent	Number	Percent
White Alone	5,983	81.8%	60,080	80.8%	132,670	75.9%
Black Alone	362	4.9%	3,703	5.0%	11,024	6.3%
American Indian Alone	45	0.6%	431	0.6%	1,001	0.6%
Asian Alone	555	7.6%	6,567	8.8%	15,751	9.0%
Pacific Islander Alone	4	0.1%	57	0.1%	135	0.1%
Some Other Race Alone	180	2.5%	1,562	2.1%	9,044	5.2%
Two or More Races	187	2.6%	1,961	2.6%	5,120	2.9%
Hispanic Origin (Any Race)	688	9.4%	7,452	10.0%	27,576	15.8%

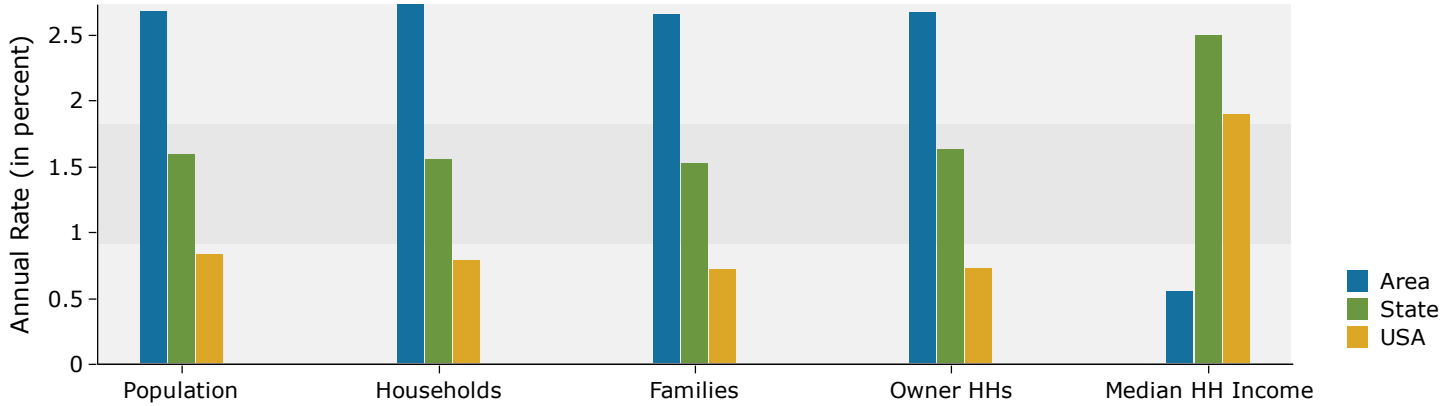
  

2024 Race and Ethnicity	1 mile		3 miles		5 miles	
	Number	Percent	Number	Percent	Number	Percent
White Alone	6,603	79.1%	63,353	78.1%	140,190	73.1%
Black Alone	510	6.1%	4,943	6.1%	14,429	7.5%
American Indian Alone	50	0.6%	468	0.6%	1,084	0.6%
Asian Alone	724	8.7%	8,074	9.9%	19,276	10.0%
Pacific Islander Alone	4	0.0%	63	0.1%	152	0.1%
Some Other Race Alone	230	2.8%	1,922	2.4%	10,654	5.6%
Two or More Races	231	2.8%	2,340	2.9%	6,031	3.1%
Hispanic Origin (Any Race)	871	10.4%	9,001	11.1%	32,478	16.9%

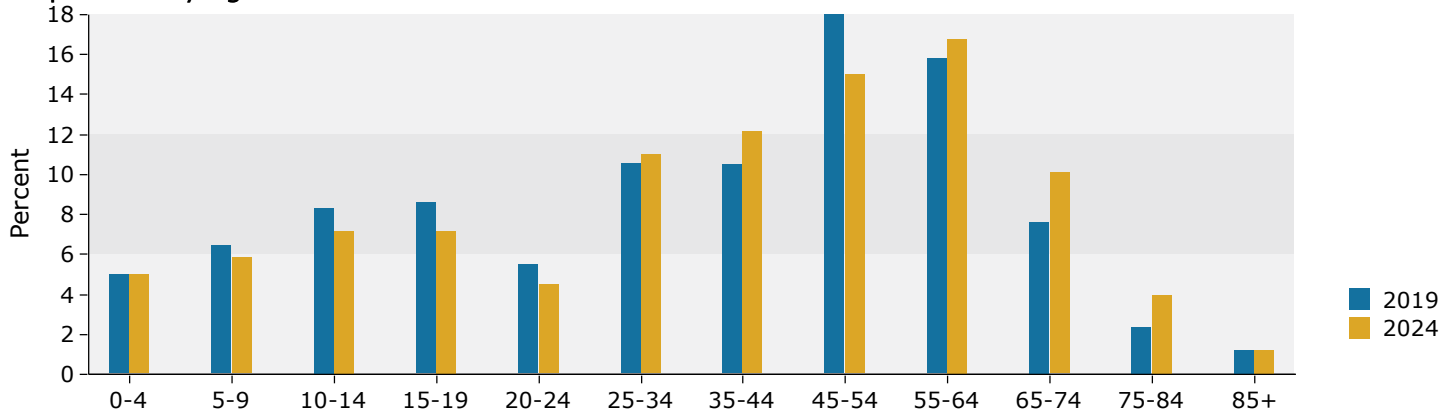
Source: U.S. Census Bureau, Census 2010 Summary File 1. Esri forecasts for 2019 and 2024.

## 1 mile

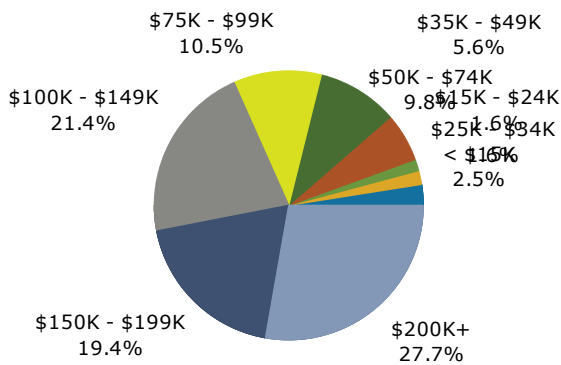
### Trends 2019-2024



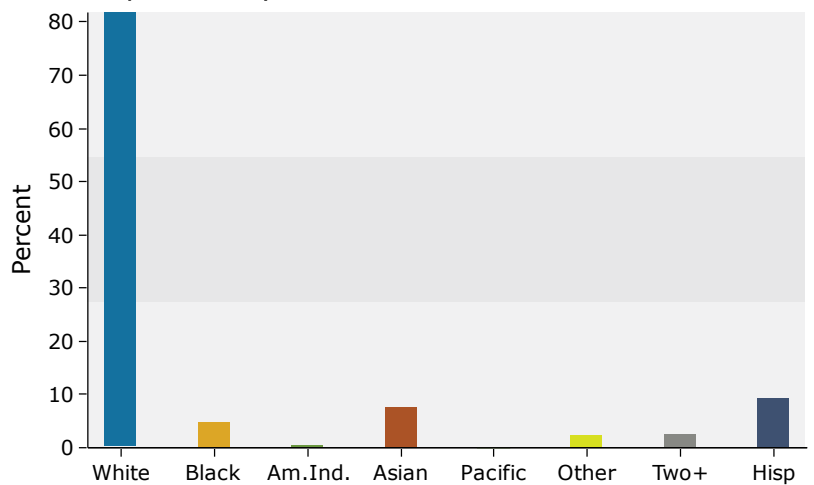
### Population by Age



### 2019 Household Income



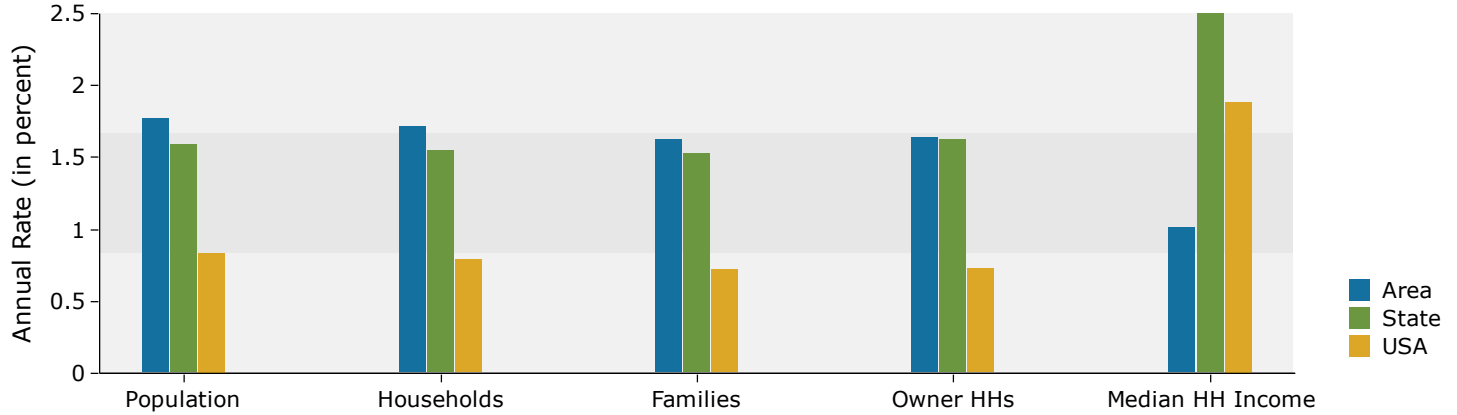
### 2019 Population by Race



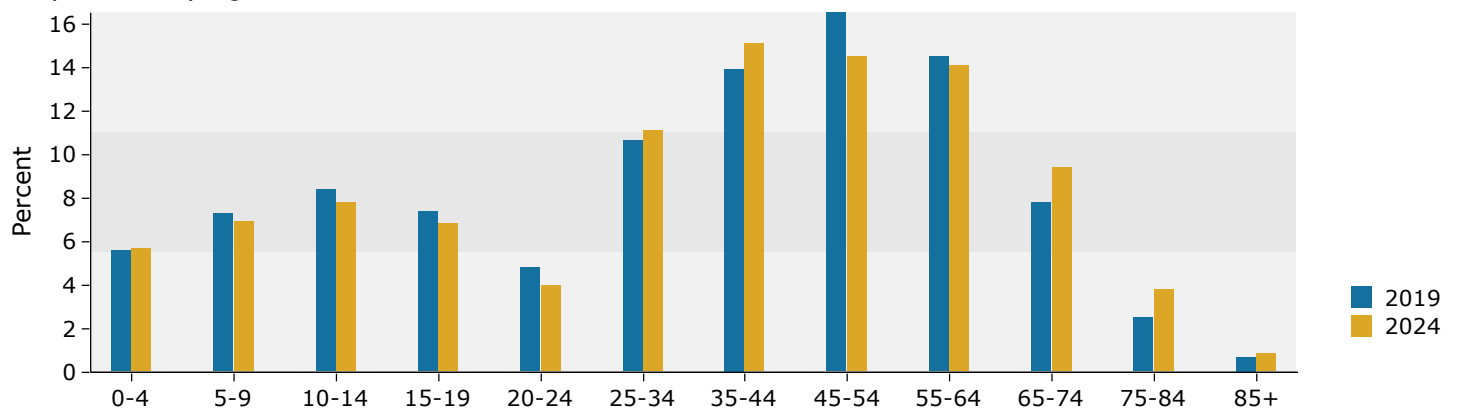
Source: U.S. Census Bureau, Census 2010 Summary File 1. Esri forecasts for 2019 and 2024.

## 3 miles

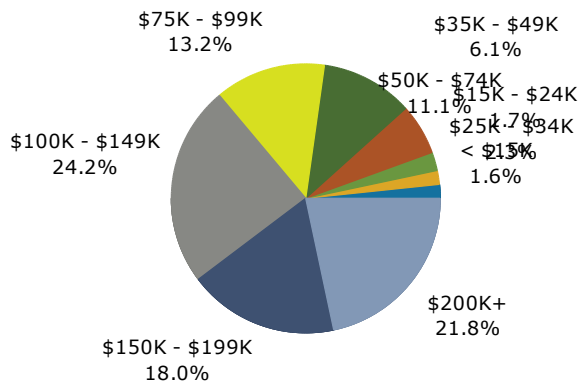
### Trends 2019-2024



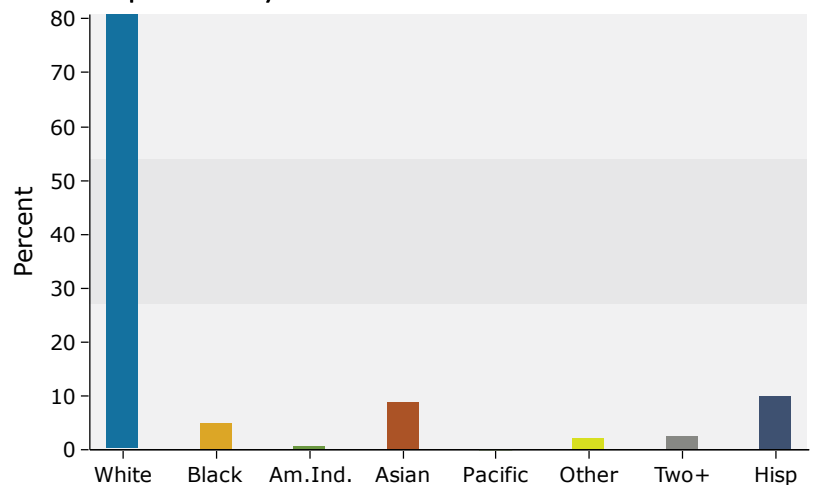
### Population by Age



### 2019 Household Income



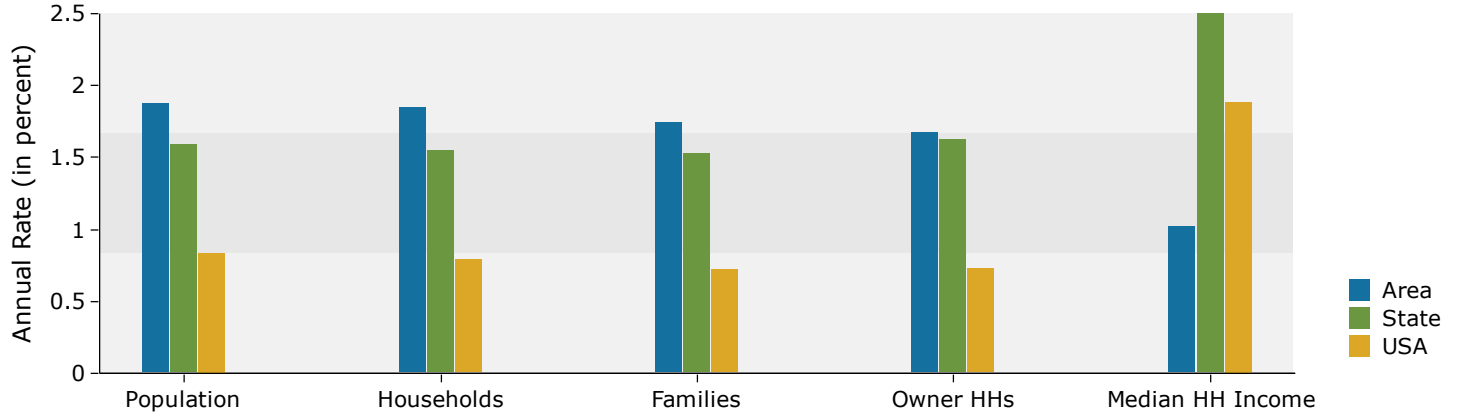
### 2019 Population by Race



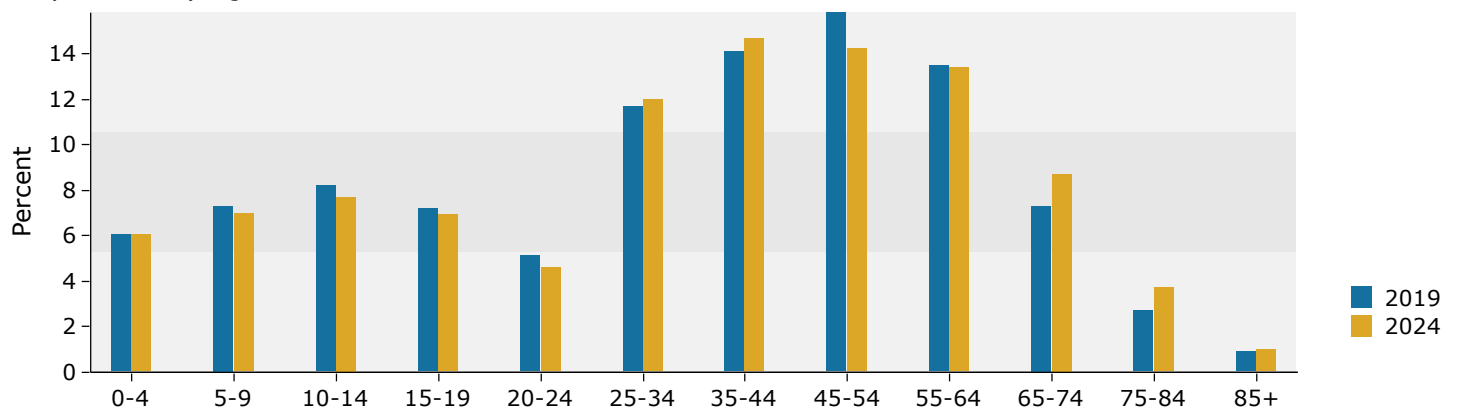
Source: U.S. Census Bureau, Census 2010 Summary File 1. Esri forecasts for 2019 and 2024.

## 5 miles

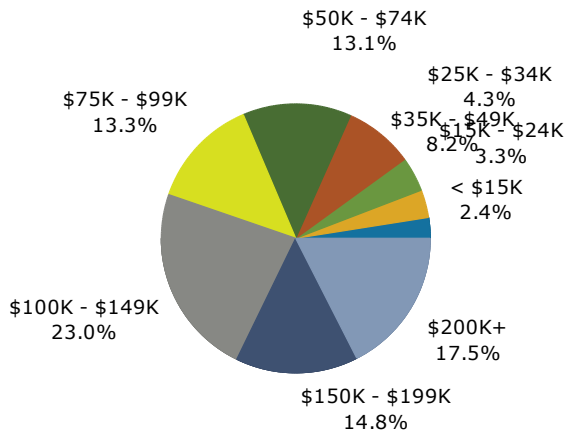
### Trends 2019-2024



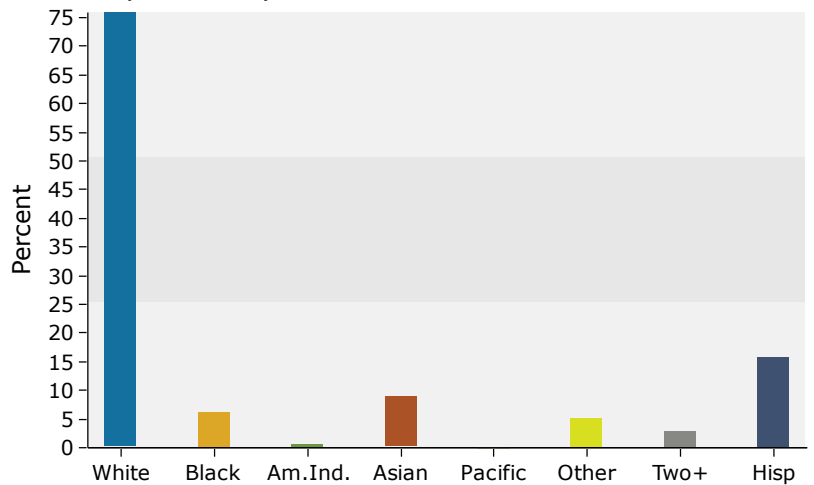
### Population by Age



### 2019 Household Income



### 2019 Population by Race



Source: U.S. Census Bureau, Census 2010 Summary File 1. Esri forecasts for 2019 and 2024.