



# Demographic and Income Comparison Profile

44764-Lakeside Winter Park  
111 N Orlando Ave  
Rings: 1, 3, 5 mile radii

Prepared by Esri  
Latitude: 28.59792  
Longitude: -81.36517

	1 mile	3 miles	5 miles
<b>Census 2010 Summary</b>			
Population	8,595	71,627	238,952
Households	4,443	31,852	106,654
Families	1,814	17,018	54,456
Average Household Size	1.89	2.18	2.19
Owner Occupied Housing Units	2,020	19,862	53,196
Renter Occupied Housing Units	2,423	11,990	53,458
Median Age	42.8	40.9	36.9
<b>2019 Summary</b>			
Population	10,217	82,171	272,998
Households	5,245	36,475	121,674
Families	2,102	19,078	60,475
Average Household Size	1.91	2.19	2.20
Owner Occupied Housing Units	2,009	20,159	53,088
Renter Occupied Housing Units	3,236	16,316	68,585
Median Age	44.1	42.7	38.3
Median Household Income	\$49,360	\$70,063	\$54,855
Average Household Income	\$81,506	\$112,535	\$85,099
<b>2024 Summary</b>			
Population	11,483	91,769	297,688
Households	5,905	40,759	132,904
Families	2,354	21,134	65,383
Average Household Size	1.91	2.20	2.20
Owner Occupied Housing Units	2,239	21,654	57,685
Renter Occupied Housing Units	3,666	19,105	75,220
Median Age	43.8	43.0	38.8
Median Household Income	\$55,206	\$77,971	\$61,568
Average Household Income	\$91,357	\$122,140	\$95,699
<b>Trends: 2019-2024 Annual Rate</b>			
Population	2.36%	2.23%	1.75%
Households	2.40%	2.25%	1.78%
Families	2.29%	2.07%	1.57%
Owner Households	2.19%	1.44%	1.67%
Median Household Income	2.26%	2.16%	2.34%

Source: U.S. Census Bureau, Census 2010 Summary File 1. Esri forecasts for 2019 and 2024.



# Demographic and Income Comparison Profile

44764-Lakeside Winter Park  
 111 N Orlando Ave  
 Rings: 1, 3, 5 mile radii

Prepared by Esri  
 Latitude: 28.59792  
 Longitude: -81.36517

2019 Households by Income	1 mile		3 miles		5 miles	
	Number	Percent	Number	Percent	Number	Percent
<\$15,000	813	15.5%	3,346	9.2%	15,998	13.1%
\$15,000 - \$24,999	656	12.5%	2,936	8.0%	11,699	9.6%
\$25,000 - \$34,999	442	8.4%	2,615	7.2%	11,087	9.1%
\$35,000 - \$49,999	735	14.0%	3,979	10.9%	16,094	13.2%
\$50,000 - \$74,999	937	17.9%	6,286	17.2%	22,416	18.4%
\$75,000 - \$99,999	393	7.5%	4,037	11.1%	13,110	10.8%
\$100,000 - \$149,999	548	10.4%	5,356	14.7%	14,695	12.1%
\$150,000 - \$199,999	283	5.4%	2,825	7.7%	6,912	5.7%
\$200,000+	438	8.4%	5,095	14.0%	9,663	7.9%
Median Household Income	\$49,360		\$70,063		\$54,855	
Average Household Income	\$81,506		\$112,535		\$85,099	
Per Capita Income	\$41,133		\$50,132		\$37,866	

2024 Households by Income	1 mile		3 miles		5 miles	
	Number	Percent	Number	Percent	Number	Percent
<\$15,000	740	12.5%	3,076	7.5%	14,281	10.7%
\$15,000 - \$24,999	629	10.7%	2,777	6.8%	10,770	8.1%
\$25,000 - \$34,999	474	8.0%	2,597	6.4%	10,672	8.0%
\$35,000 - \$49,999	807	13.7%	4,203	10.3%	16,759	12.6%
\$50,000 - \$74,999	1,070	18.1%	7,015	17.2%	24,968	18.8%
\$75,000 - \$99,999	501	8.5%	4,733	11.6%	15,557	11.7%
\$100,000 - \$149,999	728	12.3%	6,566	16.1%	18,582	14.0%
\$150,000 - \$199,999	427	7.2%	3,943	9.7%	9,906	7.5%
\$200,000+	528	8.9%	5,849	14.4%	11,409	8.6%
Median Household Income	\$55,206		\$77,971		\$61,568	
Average Household Income	\$91,357		\$122,140		\$95,699	
Per Capita Income	\$46,216		\$54,437		\$42,648	

**Data Note:** Income is expressed in current dollars.

**Source:** U.S. Census Bureau, Census 2010 Summary File 1. Esri forecasts for 2019 and 2024.



# Demographic and Income Comparison Profile

44764-Lakeside Winter Park  
 111 N Orlando Ave  
 Rings: 1, 3, 5 mile radii

Prepared by Esri  
 Latitude: 28.59792  
 Longitude: -81.36517

2010 Population by Age	1 mile		3 miles		5 miles	
	Number	Percent	Number	Percent	Number	Percent
Age 0 - 4	364	4.2%	3,635	5.1%	13,644	5.7%
Age 5 - 9	367	4.3%	3,717	5.2%	12,696	5.3%
Age 10 - 14	349	4.1%	3,698	5.2%	12,213	5.1%
Age 15 - 19	356	4.1%	4,173	5.8%	14,414	6.0%
Age 20 - 24	744	8.7%	4,731	6.6%	20,247	8.5%
Age 25 - 34	1,284	14.9%	10,042	14.0%	40,118	16.8%
Age 35 - 44	1,074	12.5%	9,951	13.9%	32,435	13.6%
Age 45 - 54	1,229	14.3%	11,556	16.1%	34,226	14.3%
Age 55 - 64	1,172	13.6%	9,066	12.7%	26,422	11.1%
Age 65 - 74	783	9.1%	4,987	7.0%	15,498	6.5%
Age 75 - 84	590	6.9%	3,879	5.4%	11,359	4.8%
Age 85+	284	3.3%	2,193	3.1%	5,680	2.4%

2019 Population by Age	1 mile		3 miles		5 miles	
	Number	Percent	Number	Percent	Number	Percent
Age 0 - 4	418	4.1%	3,773	4.6%	14,117	5.2%
Age 5 - 9	405	4.0%	3,841	4.7%	13,369	4.9%
Age 10 - 14	418	4.1%	4,108	5.0%	13,416	4.9%
Age 15 - 19	445	4.4%	4,609	5.6%	14,647	5.4%
Age 20 - 24	728	7.1%	5,278	6.4%	20,969	7.7%
Age 25 - 34	1,586	15.5%	11,287	13.7%	47,148	17.3%
Age 35 - 44	1,215	11.9%	10,476	12.7%	36,053	13.2%
Age 45 - 54	1,237	12.1%	11,029	13.4%	33,716	12.4%
Age 55 - 64	1,460	14.3%	12,054	14.7%	34,020	12.5%
Age 65 - 74	1,185	11.6%	8,496	10.3%	24,598	9.0%
Age 75 - 84	720	7.0%	4,445	5.4%	13,497	4.9%
Age 85+	402	3.9%	2,774	3.4%	7,449	2.7%

2024 Population by Age	1 mile		3 miles		5 miles	
	Number	Percent	Number	Percent	Number	Percent
Age 0 - 4	504	4.4%	4,305	4.7%	15,643	5.3%
Age 5 - 9	465	4.1%	4,226	4.6%	14,325	4.8%
Age 10 - 14	447	3.9%	4,240	4.6%	14,036	4.7%
Age 15 - 19	474	4.1%	4,762	5.2%	15,243	5.1%
Age 20 - 24	865	7.5%	5,956	6.5%	22,496	7.6%
Age 25 - 34	1,717	15.0%	13,056	14.2%	50,929	17.1%
Age 35 - 44	1,441	12.6%	11,647	12.7%	40,260	13.5%
Age 45 - 54	1,282	11.2%	11,263	12.3%	34,288	11.5%
Age 55 - 64	1,504	13.1%	12,417	13.5%	34,955	11.7%
Age 65 - 74	1,404	12.2%	10,868	11.8%	29,747	10.0%
Age 75 - 84	912	7.9%	6,024	6.6%	17,547	5.9%
Age 85+	466	4.1%	3,006	3.3%	8,221	2.8%

Source: U.S. Census Bureau, Census 2010 Summary File 1. Esri forecasts for 2019 and 2024.



# Demographic and Income Comparison Profile

44764-Lakeside Winter Park  
 111 N Orlando Ave  
 Rings: 1, 3, 5 mile radii

Prepared by Esri  
 Latitude: 28.59792  
 Longitude: -81.36517

2010 Race and Ethnicity	1 mile		3 miles		5 miles	
	Number	Percent	Number	Percent	Number	Percent
White Alone	6,324	73.6%	59,672	83.3%	171,635	71.8%
Black Alone	1,671	19.4%	7,016	9.8%	42,844	17.9%
American Indian Alone	16	0.2%	176	0.2%	833	0.3%
Asian Alone	194	2.3%	2,010	2.8%	7,052	3.0%
Pacific Islander Alone	1	0.0%	23	0.0%	127	0.1%
Some Other Race Alone	160	1.9%	1,171	1.6%	9,514	4.0%
Two or More Races	228	2.7%	1,559	2.2%	6,946	2.9%
Hispanic Origin (Any Race)	770	9.0%	6,143	8.6%	39,232	16.4%

2019 Race and Ethnicity	1 mile		3 miles		5 miles	
	Number	Percent	Number	Percent	Number	Percent
White Alone	6,979	68.3%	64,938	79.0%	185,134	67.8%
Black Alone	2,348	23.0%	9,864	12.0%	53,210	19.5%
American Indian Alone	19	0.2%	235	0.3%	1,015	0.4%
Asian Alone	276	2.7%	2,854	3.5%	9,643	3.5%
Pacific Islander Alone	1	0.0%	25	0.0%	148	0.1%
Some Other Race Alone	255	2.5%	1,885	2.3%	14,029	5.1%
Two or More Races	340	3.3%	2,371	2.9%	9,818	3.6%
Hispanic Origin (Any Race)	1,268	12.4%	10,055	12.2%	58,489	21.4%

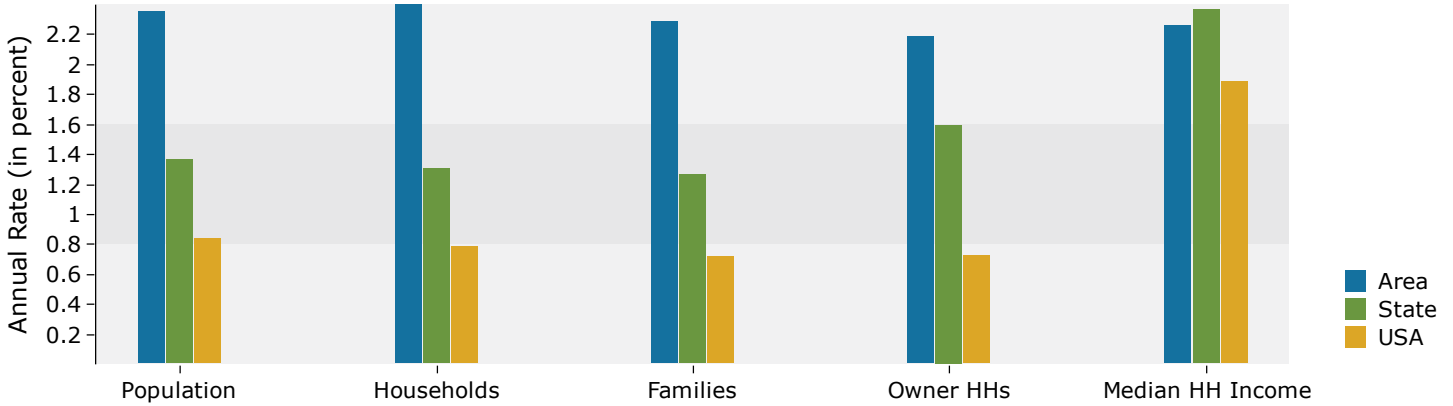
  

2024 Race and Ethnicity	1 mile		3 miles		5 miles	
	Number	Percent	Number	Percent	Number	Percent
White Alone	7,840	68.3%	72,384	78.9%	200,520	67.4%
Black Alone	2,662	23.2%	11,146	12.1%	58,354	19.6%
American Indian Alone	20	0.2%	253	0.3%	1,115	0.4%
Asian Alone	305	2.7%	3,178	3.5%	10,803	3.6%
Pacific Islander Alone	1	0.0%	26	0.0%	158	0.1%
Some Other Race Alone	278	2.4%	2,098	2.3%	15,721	5.3%
Two or More Races	376	3.3%	2,684	2.9%	11,019	3.7%
Hispanic Origin (Any Race)	1,428	12.4%	11,241	12.2%	66,284	22.3%

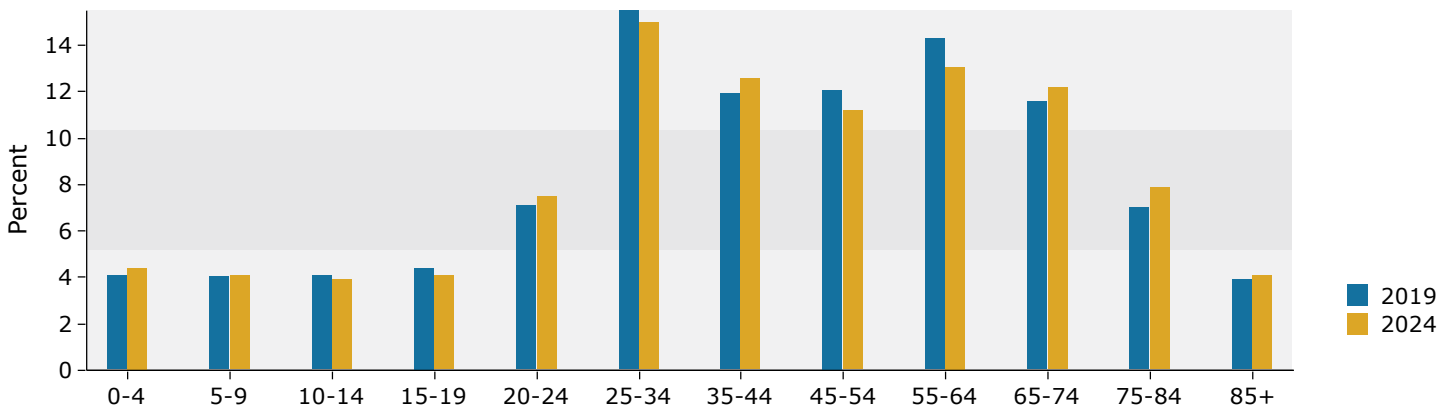
Source: U.S. Census Bureau, Census 2010 Summary File 1. Esri forecasts for 2019 and 2024.

## 1 mile

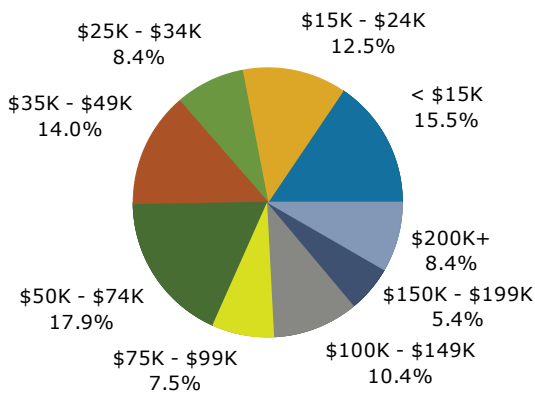
### Trends 2019-2024



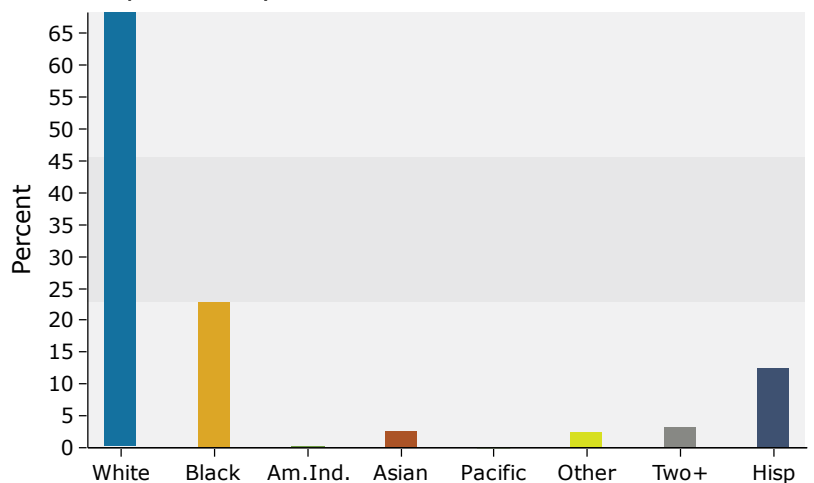
### Population by Age



### 2019 Household Income



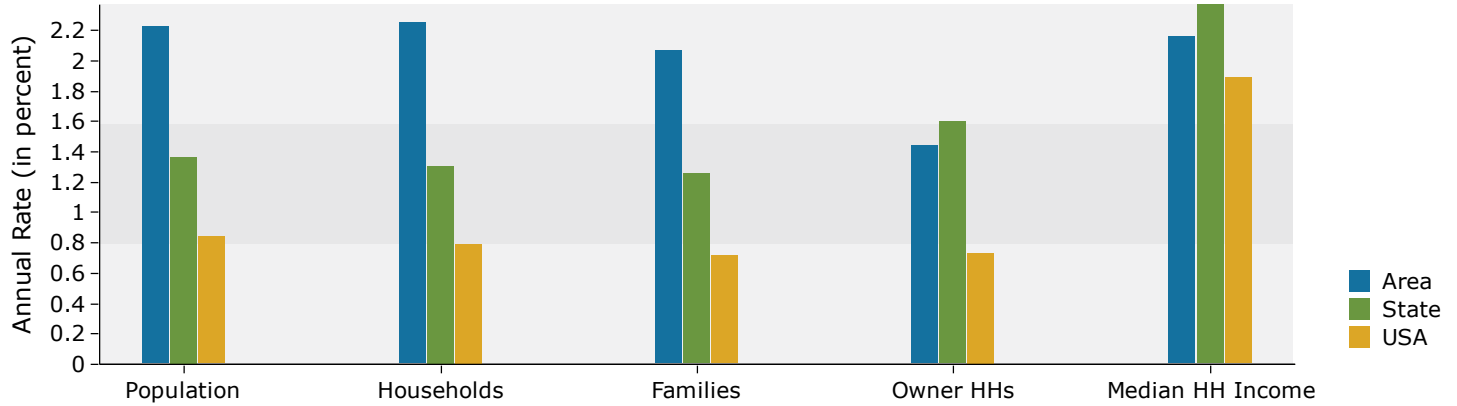
### 2019 Population by Race



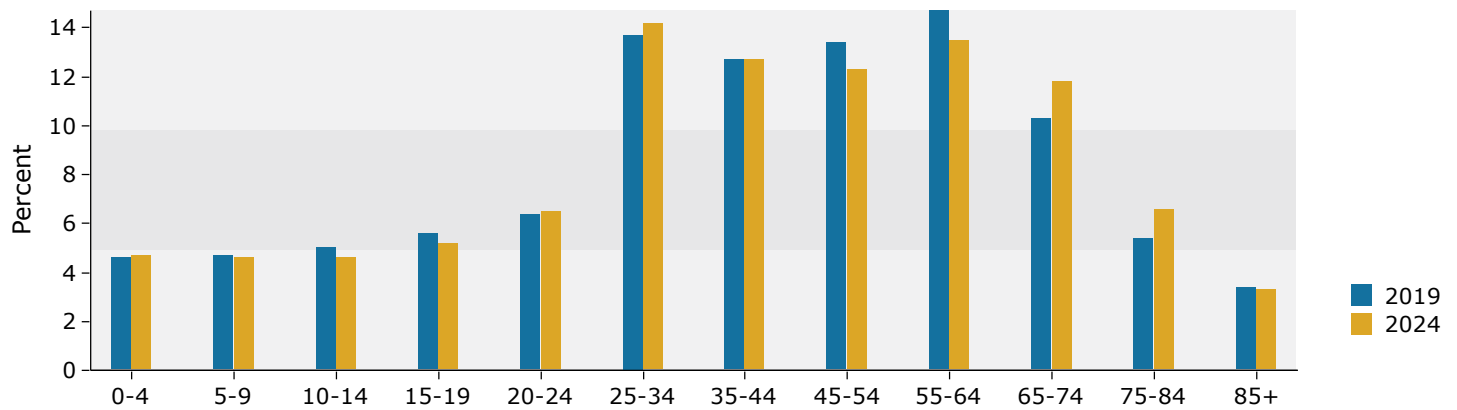
Source: U.S. Census Bureau, Census 2010 Summary File 1. Esri forecasts for 2019 and 2024.

## 3 miles

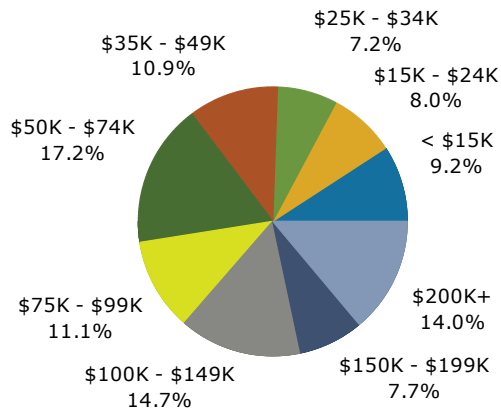
### Trends 2019-2024



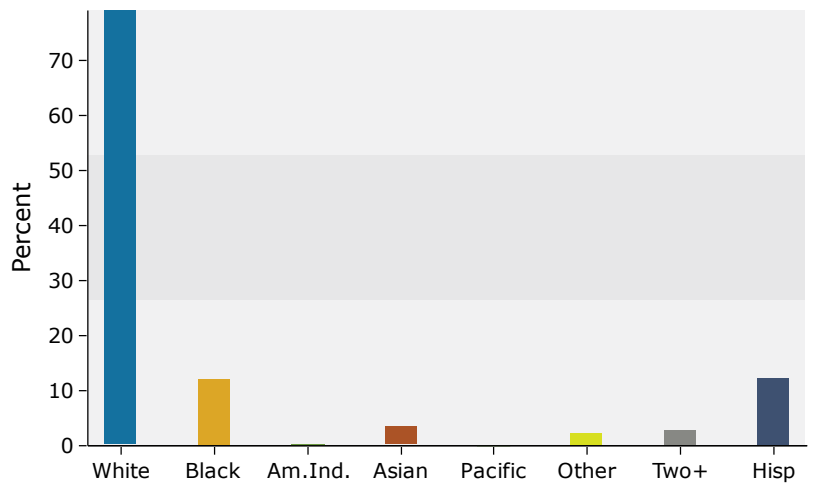
### Population by Age



### 2019 Household Income



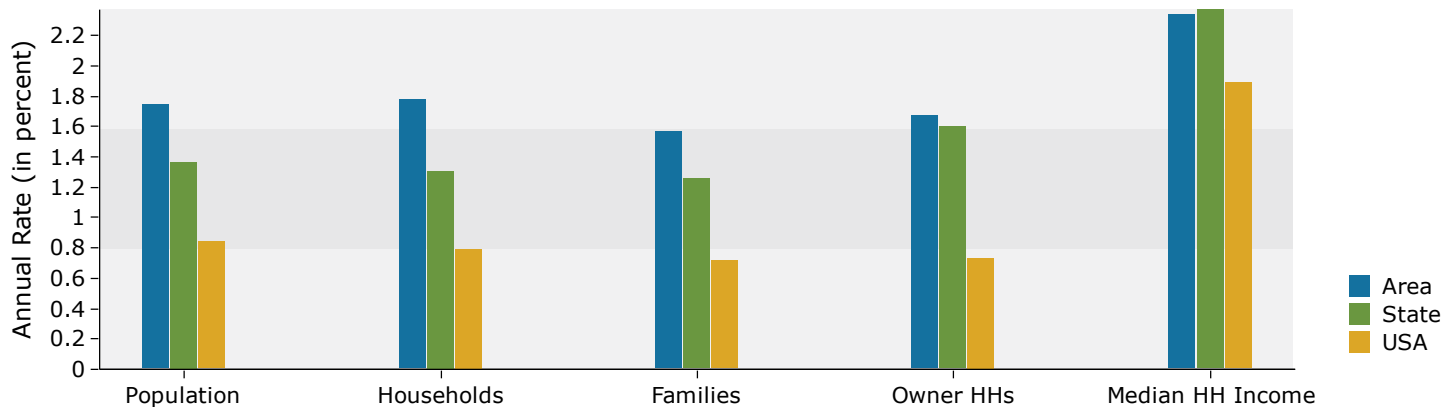
### 2019 Population by Race



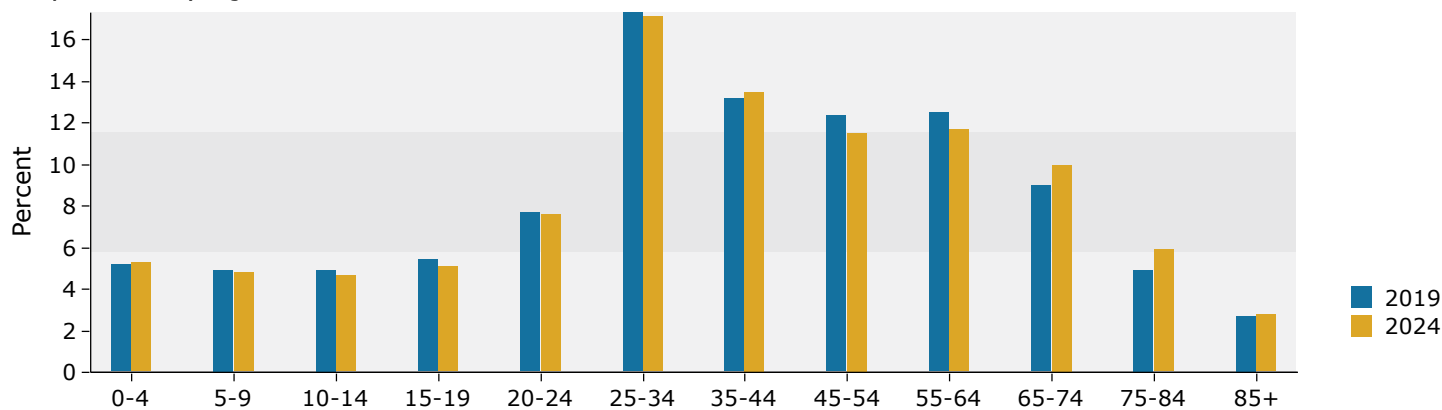
Source: U.S. Census Bureau, Census 2010 Summary File 1. Esri forecasts for 2019 and 2024.

## 5 miles

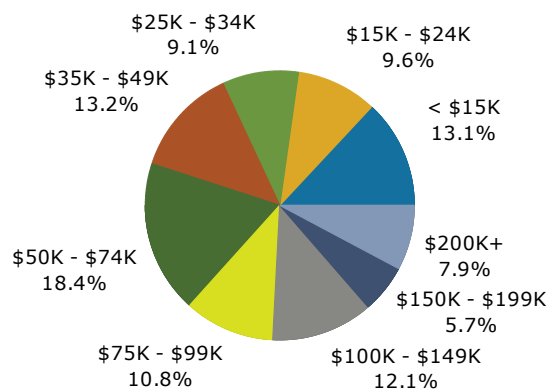
### Trends 2019-2024



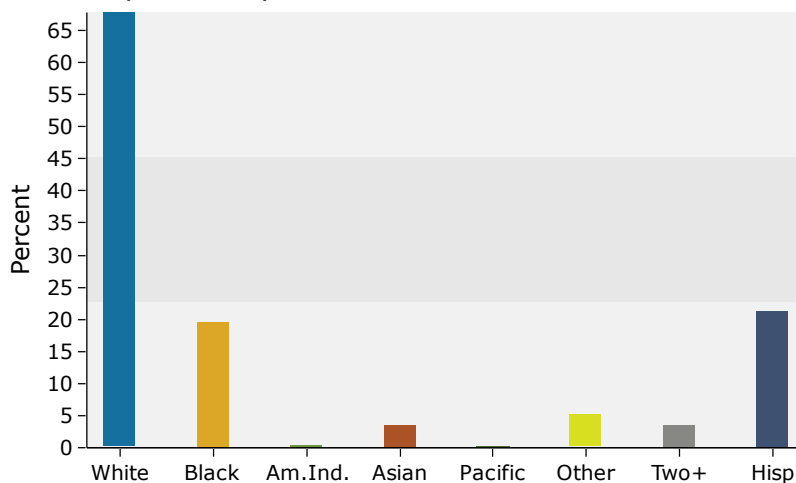
### Population by Age



### 2019 Household Income



### 2019 Population by Race



Source: U.S. Census Bureau, Census 2010 Summary File 1. Esri forecasts for 2019 and 2024.