



# Demographic and Income Comparison Profile

44745-The Pointe at Creedmoor  
5550 Creedmoor Rd  
Rings: 1, 3, 5 mile radii

Prepared by Esri  
Latitude: 35.85736  
Longitude: -78.68047

	1 mile	3 miles	5 miles
<b>Census 2010 Summary</b>			
Population	9,535	84,202	172,465
Households	4,381	40,057	75,771
Families	2,549	20,994	41,396
Average Household Size	2.17	2.09	2.19
Owner Occupied Housing Units	2,428	21,912	43,257
Renter Occupied Housing Units	1,953	18,145	32,514
Median Age	38.0	37.4	35.6
<b>2019 Summary</b>			
Population	10,016	94,673	196,929
Households	4,606	45,039	86,703
Families	2,616	23,020	46,039
Average Household Size	2.17	2.09	2.19
Owner Occupied Housing Units	2,461	23,414	46,326
Renter Occupied Housing Units	2,145	21,625	40,377
Median Age	39.4	39.5	37.7
Median Household Income	\$85,297	\$77,756	\$78,667
Average Household Income	\$111,057	\$109,435	\$112,673
<b>2024 Summary</b>			
Population	10,575	101,855	212,835
Households	4,855	48,413	93,824
Families	2,733	24,554	49,331
Average Household Size	2.18	2.09	2.20
Owner Occupied Housing Units	2,661	25,496	50,532
Renter Occupied Housing Units	2,194	22,916	43,293
Median Age	39.7	40.7	38.6
Median Household Income	\$96,164	\$87,070	\$87,485
Average Household Income	\$123,579	\$122,037	\$123,980
<b>Trends: 2019-2024 Annual Rate</b>			
Population	1.09%	1.47%	1.57%
Households	1.06%	1.46%	1.59%
Families	0.88%	1.30%	1.39%
Owner Households	1.57%	1.72%	1.75%
Median Household Income	2.43%	2.29%	2.15%

Source: U.S. Census Bureau, Census 2010 Summary File 1. Esri forecasts for 2019 and 2024.



# Demographic and Income Comparison Profile

44745-The Pointe at Creedmoor  
5550 Creedmoor Rd  
Rings: 1, 3, 5 mile radii

Prepared by Esri  
Latitude: 35.85736  
Longitude: -78.68047

2019 Households by Income	1 mile		3 miles		5 miles	
	Number	Percent	Number	Percent	Number	Percent
<\$15,000	185	4.0%	1,682	3.7%	3,726	4.3%
\$15,000 - \$24,999	236	5.1%	2,584	5.7%	5,342	6.2%
\$25,000 - \$34,999	328	7.1%	3,172	7.0%	5,963	6.9%
\$35,000 - \$49,999	438	9.5%	5,709	12.7%	10,818	12.5%
\$50,000 - \$74,999	794	17.2%	8,500	18.9%	15,447	17.8%
\$75,000 - \$99,999	666	14.5%	6,109	13.6%	11,039	12.7%
\$100,000 - \$149,999	919	20.0%	7,961	17.7%	15,316	17.7%
\$150,000 - \$199,999	563	12.2%	4,246	9.4%	8,335	9.6%
\$200,000+	477	10.4%	5,074	11.3%	10,708	12.4%
Median Household Income	\$85,297		\$77,756		\$78,667	
Average Household Income	\$111,057		\$109,435		\$112,673	
Per Capita Income	\$49,697		\$51,828		\$49,631	

2024 Households by Income	1 mile		3 miles		5 miles	
	Number	Percent	Number	Percent	Number	Percent
<\$15,000	144	3.0%	1,312	2.7%	3,028	3.2%
\$15,000 - \$24,999	197	4.1%	2,171	4.5%	4,702	5.0%
\$25,000 - \$34,999	279	5.7%	2,711	5.6%	5,273	5.6%
\$35,000 - \$49,999	400	8.2%	5,359	11.1%	10,506	11.2%
\$50,000 - \$74,999	791	16.3%	8,920	18.4%	16,463	17.5%
\$75,000 - \$99,999	702	14.5%	6,748	13.9%	12,228	13.0%
\$100,000 - \$149,999	1,052	21.7%	9,470	19.6%	18,169	19.4%
\$150,000 - \$199,999	757	15.6%	5,866	12.1%	11,323	12.1%
\$200,000+	534	11.0%	5,854	12.1%	12,122	12.9%
Median Household Income	\$96,164		\$87,070		\$87,485	
Average Household Income	\$123,579		\$122,037		\$123,980	
Per Capita Income	\$55,176		\$57,721		\$54,662	

**Data Note:** Income is expressed in current dollars.

**Source:** U.S. Census Bureau, Census 2010 Summary File 1. Esri forecasts for 2019 and 2024.



# Demographic and Income Comparison Profile

44745-The Pointe at Creedmoor  
 5550 Creedmoor Rd  
 Rings: 1, 3, 5 mile radii

Prepared by Esri  
 Latitude: 35.85736  
 Longitude: -78.68047

2010 Population by Age	1 mile		3 miles		5 miles	
	Number	Percent	Number	Percent	Number	Percent
Age 0 - 4	589	6.2%	5,030	6.0%	10,572	6.1%
Age 5 - 9	538	5.6%	4,463	5.3%	9,729	5.6%
Age 10 - 14	485	5.1%	4,240	5.0%	8,918	5.2%
Age 15 - 19	468	4.9%	3,811	4.5%	10,903	6.3%
Age 20 - 24	677	7.1%	5,713	6.8%	14,517	8.4%
Age 25 - 34	1,601	16.8%	15,888	18.9%	30,044	17.4%
Age 35 - 44	1,336	14.0%	11,909	14.1%	24,248	14.1%
Age 45 - 54	1,362	14.3%	11,655	13.8%	23,434	13.6%
Age 55 - 64	1,163	12.2%	10,209	12.1%	19,826	11.5%
Age 65 - 74	613	6.4%	5,540	6.6%	10,478	6.1%
Age 75 - 84	438	4.6%	3,780	4.5%	6,450	3.7%
Age 85+	264	2.8%	1,964	2.3%	3,347	1.9%

2019 Population by Age	1 mile		3 miles		5 miles	
	Number	Percent	Number	Percent	Number	Percent
Age 0 - 4	540	5.4%	4,928	5.2%	10,515	5.3%
Age 5 - 9	533	5.3%	4,766	5.0%	10,418	5.3%
Age 10 - 14	573	5.7%	4,990	5.3%	10,788	5.5%
Age 15 - 19	519	5.2%	4,728	5.0%	12,845	6.5%
Age 20 - 24	659	6.6%	6,024	6.4%	16,060	8.2%
Age 25 - 34	1,544	15.4%	15,169	16.0%	29,905	15.2%
Age 35 - 44	1,360	13.6%	13,782	14.6%	27,338	13.9%
Age 45 - 54	1,276	12.7%	11,837	12.5%	24,276	12.3%
Age 55 - 64	1,292	12.9%	12,060	12.7%	24,131	12.3%
Age 65 - 74	966	9.6%	9,178	9.7%	17,498	8.9%
Age 75 - 84	455	4.5%	4,683	4.9%	8,720	4.4%
Age 85+	296	3.0%	2,528	2.7%	4,432	2.3%

2024 Population by Age	1 mile		3 miles		5 miles	
	Number	Percent	Number	Percent	Number	Percent
Age 0 - 4	571	5.4%	5,296	5.2%	11,372	5.3%
Age 5 - 9	525	5.0%	4,954	4.9%	10,858	5.1%
Age 10 - 14	554	5.2%	5,076	5.0%	10,899	5.1%
Age 15 - 19	522	4.9%	4,950	4.9%	13,335	6.3%
Age 20 - 24	773	7.3%	6,881	6.8%	17,903	8.4%
Age 25 - 34	1,733	16.4%	15,883	15.6%	32,168	15.1%
Age 35 - 44	1,335	12.6%	14,126	13.9%	28,311	13.3%
Age 45 - 54	1,274	12.0%	12,669	12.4%	25,748	12.1%
Age 55 - 64	1,269	12.0%	12,206	12.0%	24,796	11.7%
Age 65 - 74	1,104	10.4%	10,740	10.5%	20,541	9.7%
Age 75 - 84	612	5.8%	6,287	6.2%	11,846	5.6%
Age 85+	305	2.9%	2,786	2.7%	5,057	2.4%

Source: U.S. Census Bureau, Census 2010 Summary File 1. Esri forecasts for 2019 and 2024.



# Demographic and Income Comparison Profile

44745-The Pointe at Creedmoor  
 5550 Creedmoor Rd  
 Rings: 1, 3, 5 mile radii

Prepared by Esri  
 Latitude: 35.85736  
 Longitude: -78.68047

2010 Race and Ethnicity	1 mile		3 miles		5 miles	
	Number	Percent	Number	Percent	Number	Percent
White Alone	7,305	76.6%	63,788	75.8%	130,131	75.5%
Black Alone	1,109	11.6%	12,477	14.8%	24,538	14.2%
American Indian Alone	48	0.5%	296	0.4%	626	0.4%
Asian Alone	282	3.0%	2,584	3.1%	6,213	3.6%
Pacific Islander Alone	7	0.1%	40	0.0%	80	0.0%
Some Other Race Alone	575	6.0%	3,152	3.7%	7,130	4.1%
Two or More Races	209	2.2%	1,864	2.2%	3,746	2.2%
Hispanic Origin (Any Race)	992	10.4%	6,631	7.9%	14,967	8.7%

2019 Race and Ethnicity	1 mile		3 miles		5 miles	
	Number	Percent	Number	Percent	Number	Percent
White Alone	7,381	73.7%	69,747	73.7%	143,510	72.9%
Black Alone	1,209	12.1%	14,084	14.9%	28,277	14.4%
American Indian Alone	48	0.5%	306	0.3%	661	0.3%
Asian Alone	421	4.2%	4,120	4.4%	10,101	5.1%
Pacific Islander Alone	9	0.1%	61	0.1%	121	0.1%
Some Other Race Alone	685	6.8%	3,866	4.1%	9,171	4.7%
Two or More Races	263	2.6%	2,490	2.6%	5,089	2.6%
Hispanic Origin (Any Race)	1,166	11.6%	8,125	8.6%	19,051	9.7%

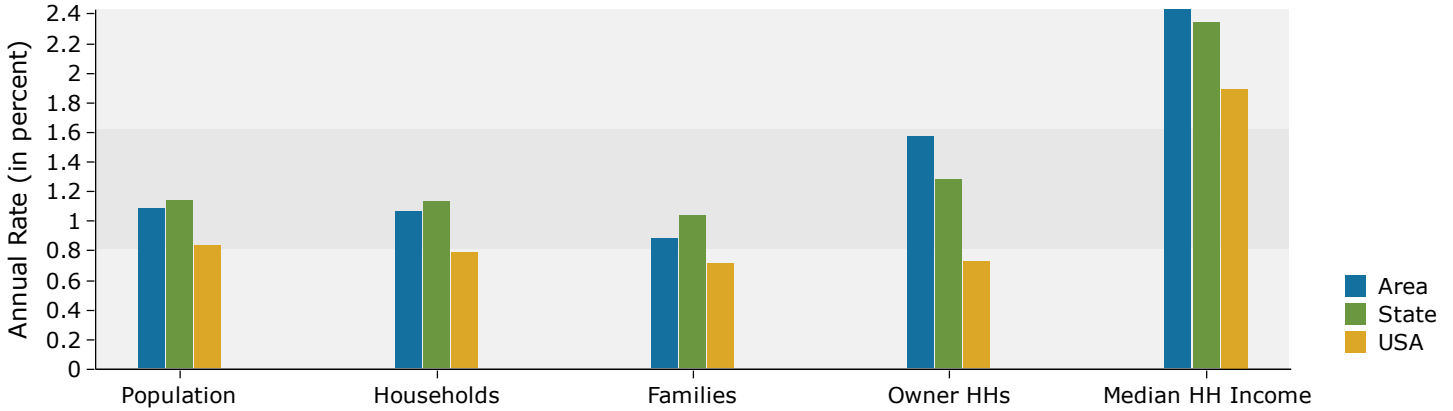
  

2024 Race and Ethnicity	1 mile		3 miles		5 miles	
	Number	Percent	Number	Percent	Number	Percent
White Alone	7,538	71.3%	73,078	71.7%	150,700	70.8%
Black Alone	1,304	12.3%	15,311	15.0%	30,792	14.5%
American Indian Alone	50	0.5%	314	0.3%	679	0.3%
Asian Alone	552	5.2%	5,472	5.4%	13,403	6.3%
Pacific Islander Alone	10	0.1%	68	0.1%	134	0.1%
Some Other Race Alone	808	7.6%	4,585	4.5%	10,937	5.1%
Two or More Races	313	3.0%	3,028	3.0%	6,190	2.9%
Hispanic Origin (Any Race)	1,363	12.9%	9,597	9.4%	22,545	10.6%

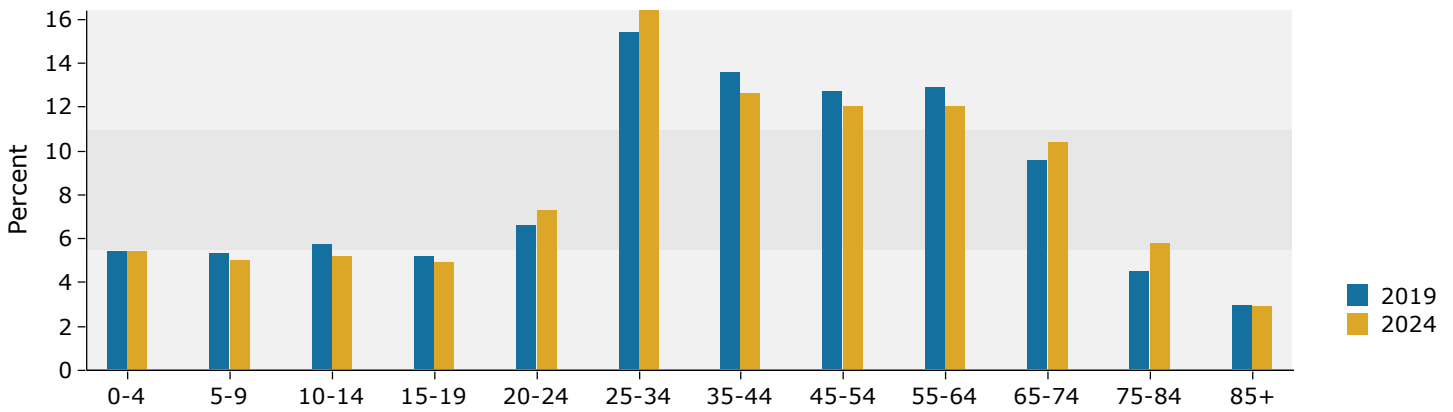
Source: U.S. Census Bureau, Census 2010 Summary File 1. Esri forecasts for 2019 and 2024.

## 1 mile

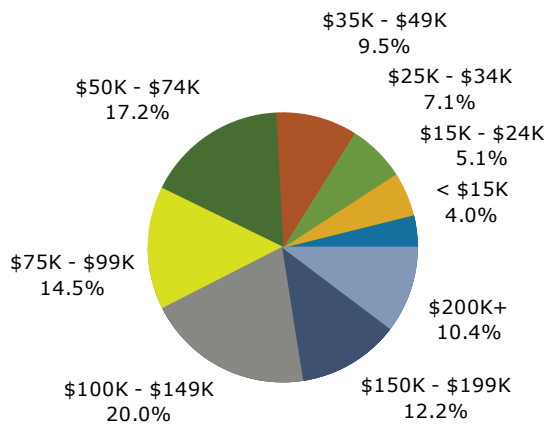
### Trends 2019-2024



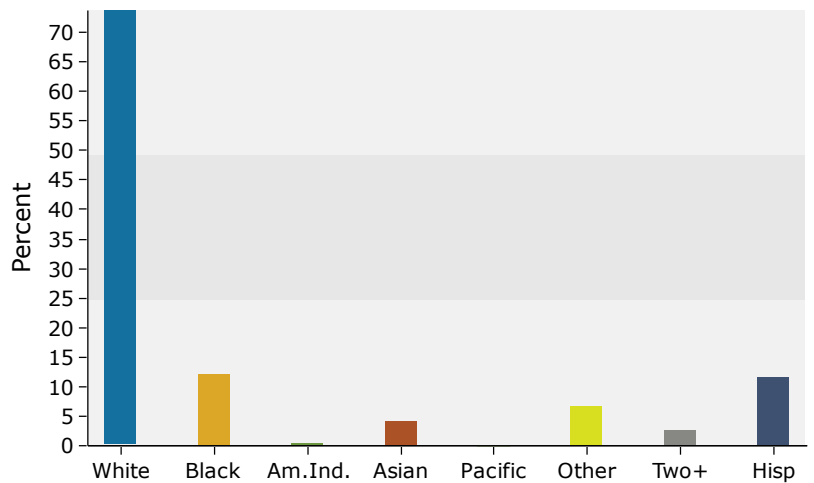
### Population by Age



### 2019 Household Income



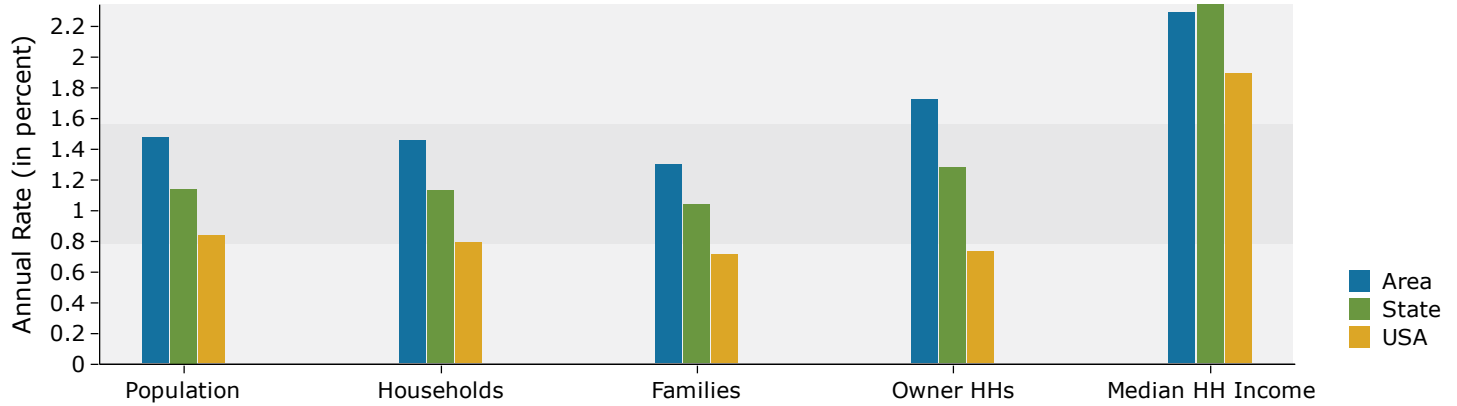
### 2019 Population by Race



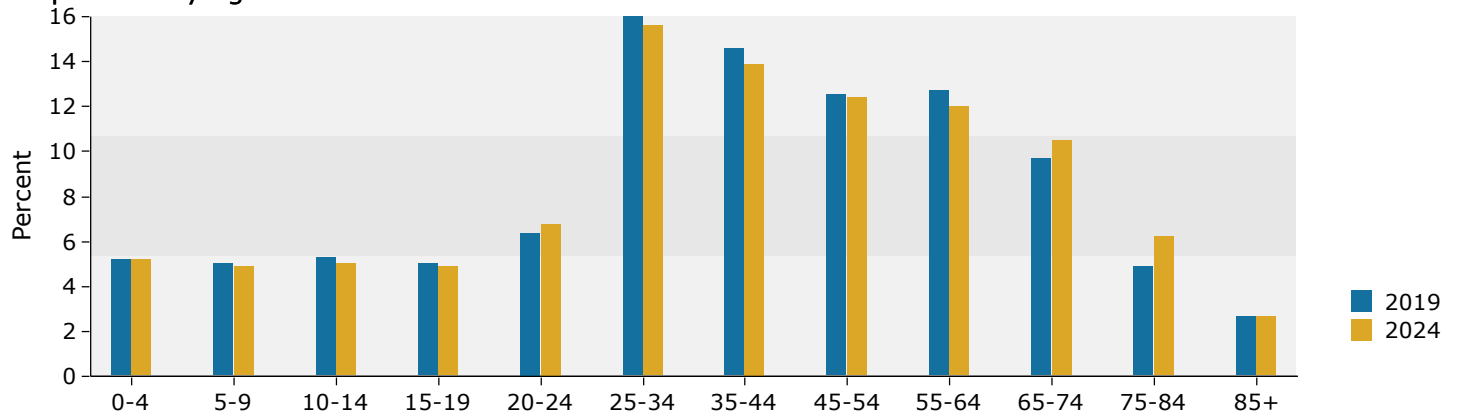
Source: U.S. Census Bureau, Census 2010 Summary File 1. Esri forecasts for 2019 and 2024.

### 3 miles

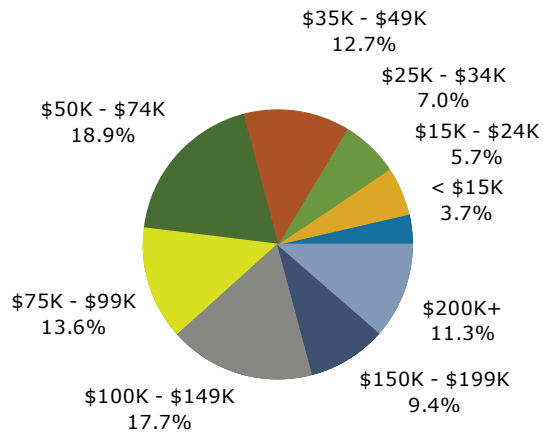
#### Trends 2019-2024



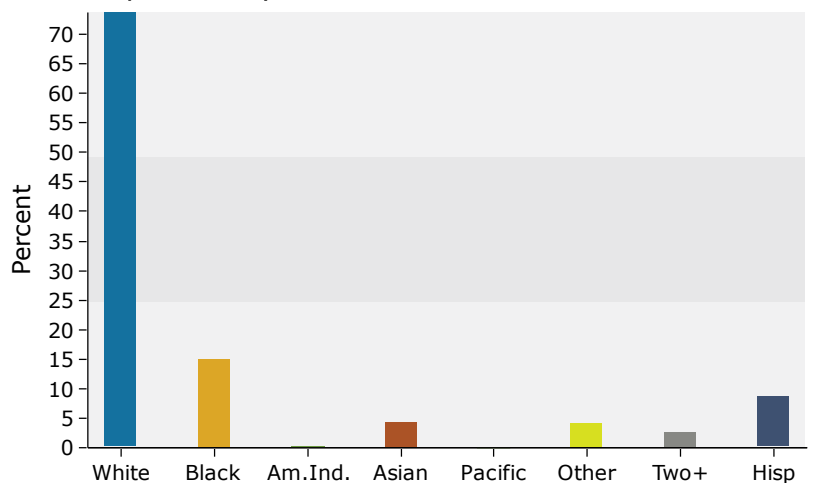
#### Population by Age



#### 2019 Household Income



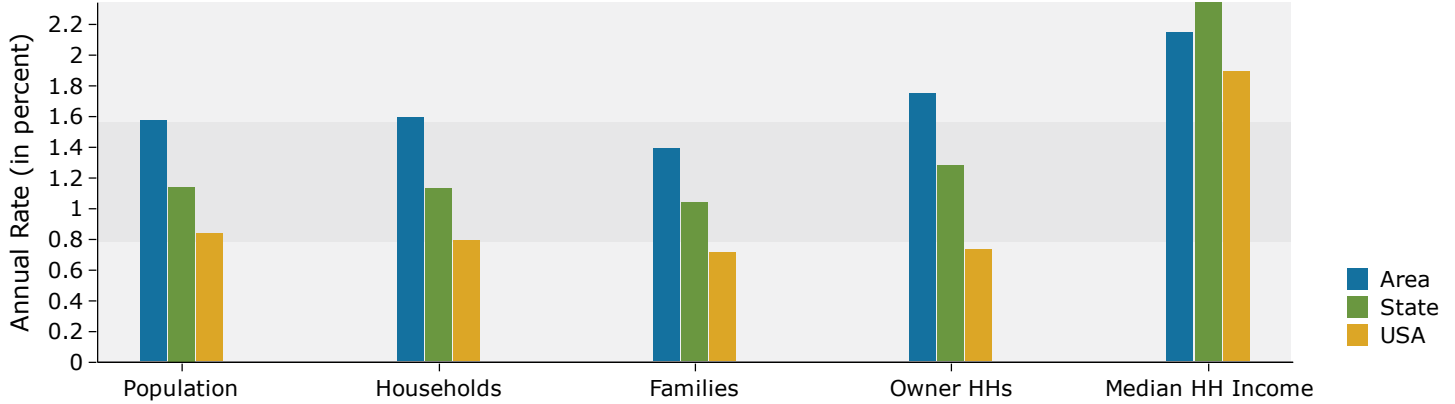
#### 2019 Population by Race



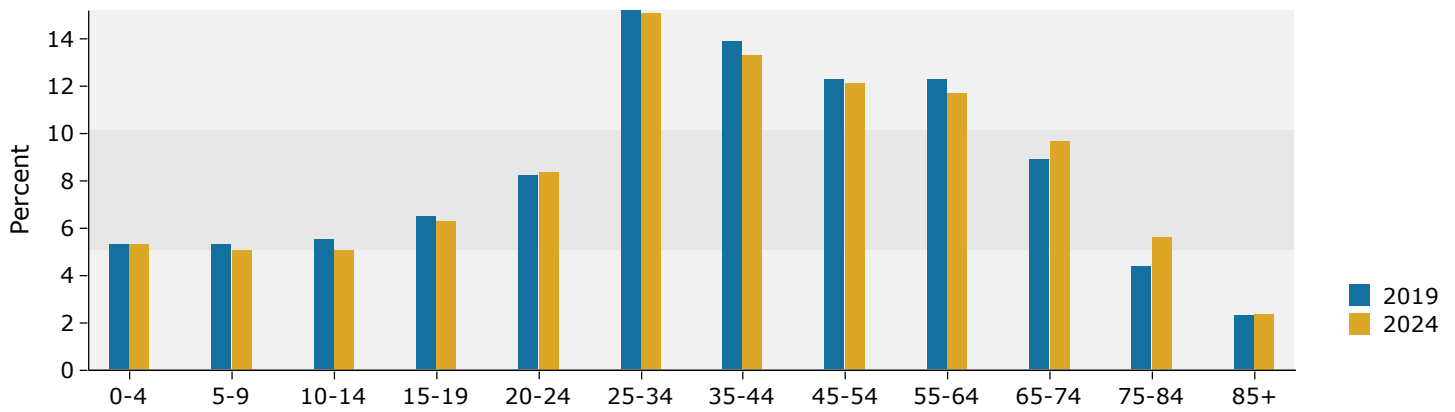
Source: U.S. Census Bureau, Census 2010 Summary File 1. Esri forecasts for 2019 and 2024.

## 5 miles

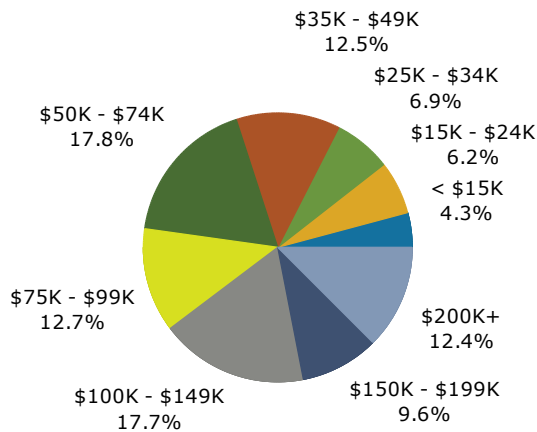
### Trends 2019-2024



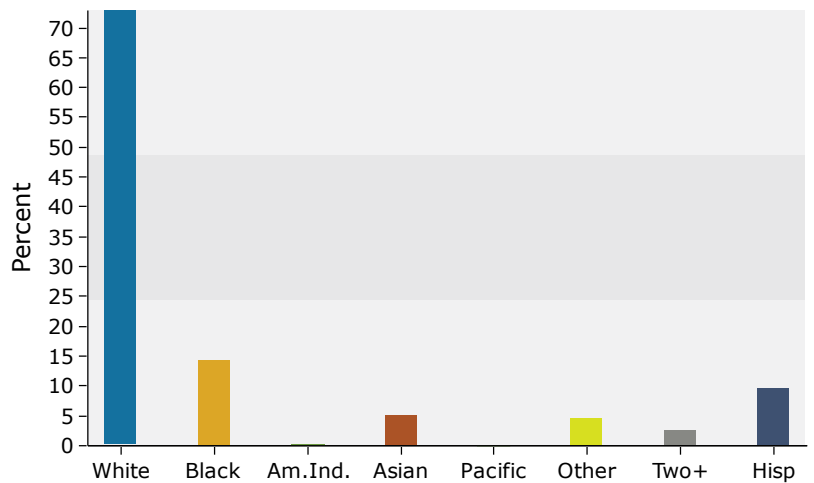
### Population by Age



### 2019 Household Income



### 2019 Population by Race



Source: U.S. Census Bureau, Census 2010 Summary File 1. Esri forecasts for 2019 and 2024.