



# Demographic and Income Comparison Profile

44744-Stevenson Ranch Plaza  
 24909 Pico Canyon Rd  
 Rings: 1, 3, 5 mile radii

Prepared by Esri  
 Latitude: 34.38145  
 Longitude: -118.57193

	1 mile	3 miles	5 miles
<b>Census 2010 Summary</b>			
Population	13,654	67,439	107,404
Households	5,046	23,493	36,754
Families	3,408	16,817	26,738
Average Household Size	2.62	2.84	2.89
Owner Occupied Housing Units	2,955	15,090	23,988
Renter Occupied Housing Units	2,091	8,403	12,766
Median Age	35.0	36.5	35.7
<b>2019 Summary</b>			
Population	14,295	69,261	113,374
Households	5,172	23,746	38,253
Families	3,507	17,081	27,953
Average Household Size	2.67	2.89	2.93
Owner Occupied Housing Units	2,913	14,887	24,882
Renter Occupied Housing Units	2,259	8,859	13,371
Median Age	35.2	37.6	37.1
Median Household Income	\$98,393	\$102,641	\$104,036
Average Household Income	\$129,019	\$133,417	\$134,269
<b>2024 Summary</b>			
Population	14,510	69,951	115,770
Households	5,214	23,825	38,843
Families	3,548	17,197	28,474
Average Household Size	2.69	2.91	2.95
Owner Occupied Housing Units	3,020	15,170	25,778
Renter Occupied Housing Units	2,194	8,655	13,065
Median Age	35.1	38.4	38.1
Median Household Income	\$110,392	\$115,854	\$118,083
Average Household Income	\$151,316	\$155,467	\$156,620
<b>Trends: 2019-2024 Annual Rate</b>			
Population	0.30%	0.20%	0.42%
Households	0.16%	0.07%	0.31%
Families	0.23%	0.14%	0.37%
Owner Households	0.72%	0.38%	0.71%
Median Household Income	2.33%	2.45%	2.57%

Source: U.S. Census Bureau, Census 2010 Summary File 1. Esri forecasts for 2019 and 2024.



# Demographic and Income Comparison Profile

44744-Stevenson Ranch Plaza  
 24909 Pico Canyon Rd  
 Rings: 1, 3, 5 mile radii

Prepared by Esri  
 Latitude: 34.38145  
 Longitude: -118.57193

2019 Households by Income	1 mile		3 miles		5 miles	
	Number	Percent	Number	Percent	Number	Percent
<\$15,000	398	7.7%	1,384	5.8%	1,938	5.1%
\$15,000 - \$24,999	188	3.6%	879	3.7%	1,568	4.1%
\$25,000 - \$34,999	218	4.2%	1,181	5.0%	1,716	4.5%
\$35,000 - \$49,999	499	9.6%	1,826	7.7%	2,861	7.5%
\$50,000 - \$74,999	673	13.0%	3,070	12.9%	5,009	13.1%
\$75,000 - \$99,999	643	12.4%	3,135	13.2%	5,049	13.2%
\$100,000 - \$149,999	1,120	21.7%	4,919	20.7%	8,100	21.2%
\$150,000 - \$199,999	462	8.9%	2,921	12.3%	4,907	12.8%
\$200,000+	972	18.8%	4,430	18.7%	7,107	18.6%
Median Household Income	\$98,393		\$102,641		\$104,036	
Average Household Income	\$129,019		\$133,417		\$134,269	
Per Capita Income	\$45,031		\$45,867		\$45,421	

2024 Households by Income	1 mile		3 miles		5 miles	
	Number	Percent	Number	Percent	Number	Percent
<\$15,000	335	6.4%	1,119	4.7%	1,579	4.1%
\$15,000 - \$24,999	148	2.8%	661	2.8%	1,185	3.1%
\$25,000 - \$34,999	171	3.3%	948	4.0%	1,379	3.6%
\$35,000 - \$49,999	401	7.7%	1,531	6.4%	2,389	6.2%
\$50,000 - \$74,999	601	11.5%	2,739	11.5%	4,464	11.5%
\$75,000 - \$99,999	620	11.9%	2,878	12.1%	4,659	12.0%
\$100,000 - \$149,999	1,137	21.8%	4,920	20.7%	8,141	21.0%
\$150,000 - \$199,999	559	10.7%	3,442	14.4%	5,955	15.3%
\$200,000+	1,241	23.8%	5,588	23.5%	9,093	23.4%
Median Household Income	\$110,392		\$115,854		\$118,083	
Average Household Income	\$151,316		\$155,467		\$156,620	
Per Capita Income	\$52,489		\$53,100		\$52,687	

**Data Note:** Income is expressed in current dollars.

**Source:** U.S. Census Bureau, Census 2010 Summary File 1. Esri forecasts for 2019 and 2024.



# Demographic and Income Comparison Profile

44744-Stevenson Ranch Plaza  
 24909 Pico Canyon Rd  
 Rings: 1, 3, 5 mile radii

Prepared by Esri  
 Latitude: 34.38145  
 Longitude: -118.57193

2010 Population by Age	1 mile		3 miles		5 miles	
	Number	Percent	Number	Percent	Number	Percent
Age 0 - 4	857	6.3%	4,297	6.4%	6,986	6.5%
Age 5 - 9	1,021	7.5%	4,929	7.3%	8,028	7.5%
Age 10 - 14	1,092	8.0%	5,258	7.8%	8,543	8.0%
Age 15 - 19	1,086	8.0%	5,150	7.6%	8,396	7.8%
Age 20 - 24	1,058	7.7%	4,612	6.8%	7,401	6.9%
Age 25 - 34	1,706	12.5%	8,054	11.9%	13,267	12.4%
Age 35 - 44	2,164	15.8%	10,289	15.3%	16,863	15.7%
Age 45 - 54	2,053	15.0%	10,875	16.1%	17,182	16.0%
Age 55 - 64	1,242	9.1%	7,281	10.8%	10,895	10.1%
Age 65 - 74	713	5.2%	3,744	5.6%	5,615	5.2%
Age 75 - 84	430	3.1%	2,005	3.0%	2,940	2.7%
Age 85+	234	1.7%	945	1.4%	1,288	1.2%

2019 Population by Age	1 mile		3 miles		5 miles	
	Number	Percent	Number	Percent	Number	Percent
Age 0 - 4	833	5.8%	4,044	5.8%	6,668	5.9%
Age 5 - 9	872	6.1%	4,395	6.3%	7,177	6.3%
Age 10 - 14	949	6.6%	4,710	6.8%	7,808	6.9%
Age 15 - 19	1,106	7.7%	4,743	6.8%	8,063	7.1%
Age 20 - 24	1,167	8.2%	4,451	6.4%	7,603	6.7%
Age 25 - 34	2,187	15.3%	9,922	14.3%	16,079	14.2%
Age 35 - 44	1,864	13.0%	8,981	13.0%	15,012	13.2%
Age 45 - 54	1,925	13.5%	9,534	13.8%	15,880	14.0%
Age 55 - 64	1,617	11.3%	8,993	13.0%	14,249	12.6%
Age 65 - 74	998	7.0%	5,788	8.4%	9,060	8.0%
Age 75 - 84	501	3.5%	2,585	3.7%	4,129	3.6%
Age 85+	276	1.9%	1,115	1.6%	1,649	1.5%

2024 Population by Age	1 mile		3 miles		5 miles	
	Number	Percent	Number	Percent	Number	Percent
Age 0 - 4	878	6.1%	4,162	5.9%	6,906	6.0%
Age 5 - 9	843	5.8%	4,267	6.1%	6,993	6.0%
Age 10 - 14	820	5.7%	4,304	6.2%	7,179	6.2%
Age 15 - 19	972	6.7%	4,260	6.1%	7,246	6.3%
Age 20 - 24	1,081	7.5%	4,016	5.7%	6,922	6.0%
Age 25 - 34	2,647	18.2%	10,237	14.6%	16,975	14.7%
Age 35 - 44	1,927	13.3%	10,196	14.6%	16,876	14.6%
Age 45 - 54	1,711	11.8%	8,429	12.1%	14,338	12.4%
Age 55 - 64	1,647	11.4%	8,764	12.5%	14,308	12.4%
Age 65 - 74	1,075	7.4%	6,629	9.5%	10,564	9.1%
Age 75 - 84	629	4.3%	3,473	5.0%	5,591	4.8%
Age 85+	280	1.9%	1,213	1.7%	1,872	1.6%

Source: U.S. Census Bureau, Census 2010 Summary File 1. Esri forecasts for 2019 and 2024.



# Demographic and Income Comparison Profile

44744-Stevenson Ranch Plaza  
 24909 Pico Canyon Rd  
 Rings: 1, 3, 5 mile radii

Prepared by Esri  
 Latitude: 34.38145  
 Longitude: -118.57193

2010 Race and Ethnicity	1 mile		3 miles		5 miles	
	Number	Percent	Number	Percent	Number	Percent
White Alone	9,096	66.6%	47,629	70.6%	75,026	69.9%
Black Alone	475	3.5%	1,703	2.5%	3,115	2.9%
American Indian Alone	70	0.5%	346	0.5%	582	0.5%
Asian Alone	2,376	17.4%	7,722	11.5%	12,888	12.0%
Pacific Islander Alone	9	0.1%	94	0.1%	155	0.1%
Some Other Race Alone	1,037	7.6%	7,084	10.5%	11,012	10.3%
Two or More Races	592	4.3%	2,862	4.2%	4,625	4.3%
Hispanic Origin (Any Race)	2,753	20.2%	18,128	26.9%	28,297	26.3%

2019 Race and Ethnicity	1 mile		3 miles		5 miles	
	Number	Percent	Number	Percent	Number	Percent
White Alone	8,995	62.9%	46,819	67.6%	75,634	66.7%
Black Alone	484	3.4%	1,707	2.5%	3,163	2.8%
American Indian Alone	71	0.5%	349	0.5%	614	0.5%
Asian Alone	2,860	20.0%	9,153	13.2%	15,591	13.8%
Pacific Islander Alone	9	0.1%	99	0.1%	169	0.1%
Some Other Race Alone	1,172	8.2%	7,782	11.2%	12,677	11.2%
Two or More Races	705	4.9%	3,352	4.8%	5,527	4.9%
Hispanic Origin (Any Race)	3,121	21.8%	19,980	28.8%	32,144	28.4%

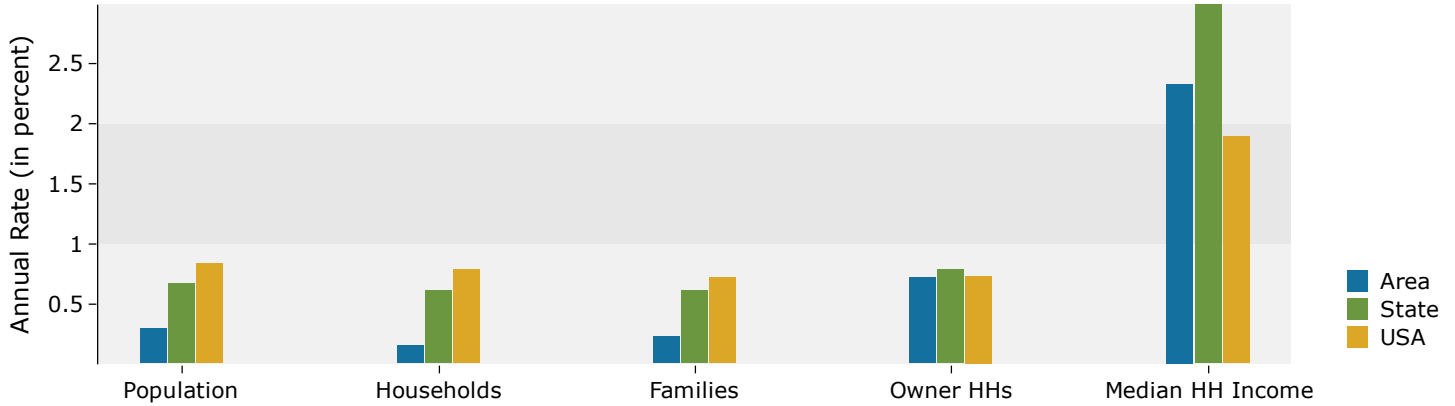
  

2024 Race and Ethnicity	1 mile		3 miles		5 miles	
	Number	Percent	Number	Percent	Number	Percent
White Alone	8,854	61.0%	46,260	66.1%	75,458	65.2%
Black Alone	477	3.3%	1,686	2.4%	3,148	2.7%
American Indian Alone	69	0.5%	346	0.5%	616	0.5%
Asian Alone	3,129	21.6%	9,977	14.3%	17,194	14.9%
Pacific Islander Alone	9	0.1%	100	0.1%	173	0.1%
Some Other Race Alone	1,226	8.4%	8,033	11.5%	13,287	11.5%
Two or More Races	748	5.2%	3,548	5.1%	5,895	5.1%
Hispanic Origin (Any Race)	3,331	23.0%	21,063	30.1%	34,252	29.6%

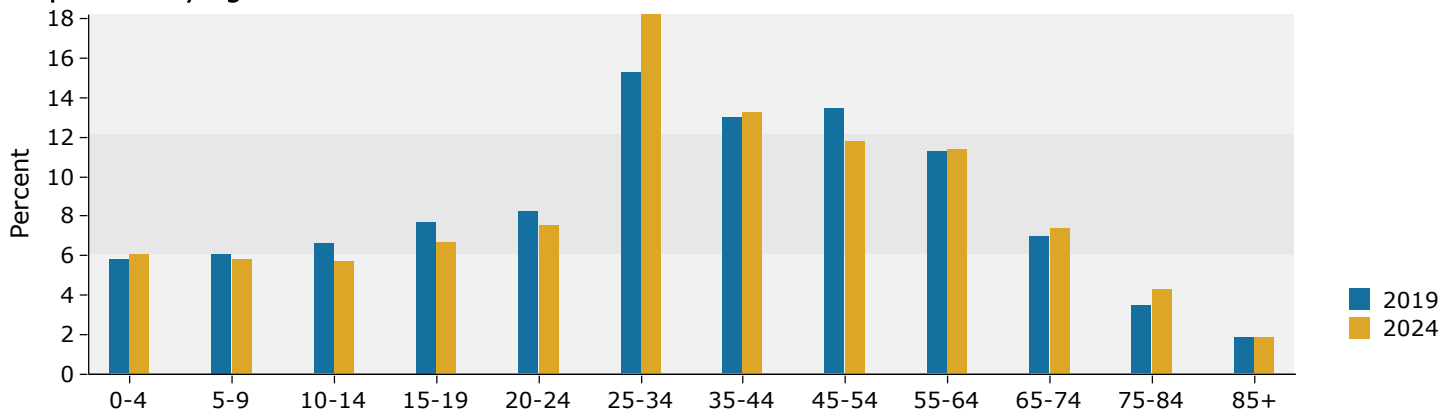
Source: U.S. Census Bureau, Census 2010 Summary File 1. Esri forecasts for 2019 and 2024.

## 1 mile

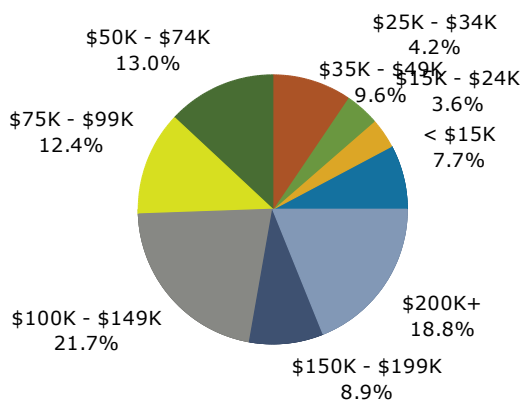
### Trends 2019-2024



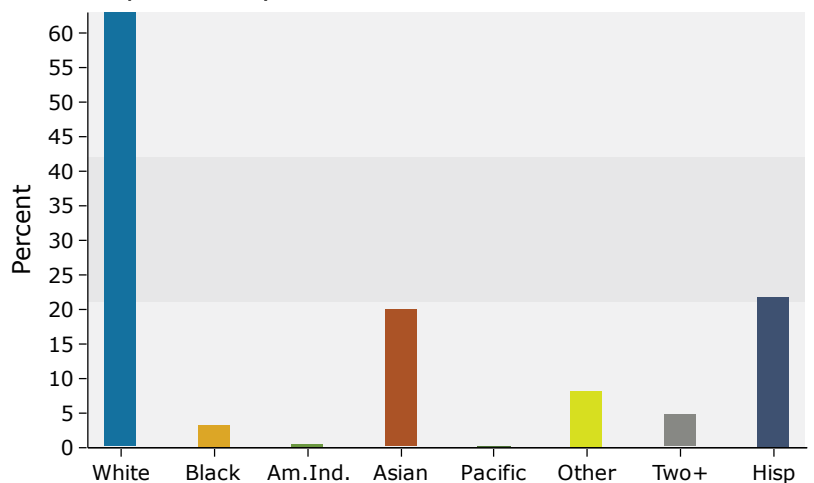
### Population by Age



### 2019 Household Income



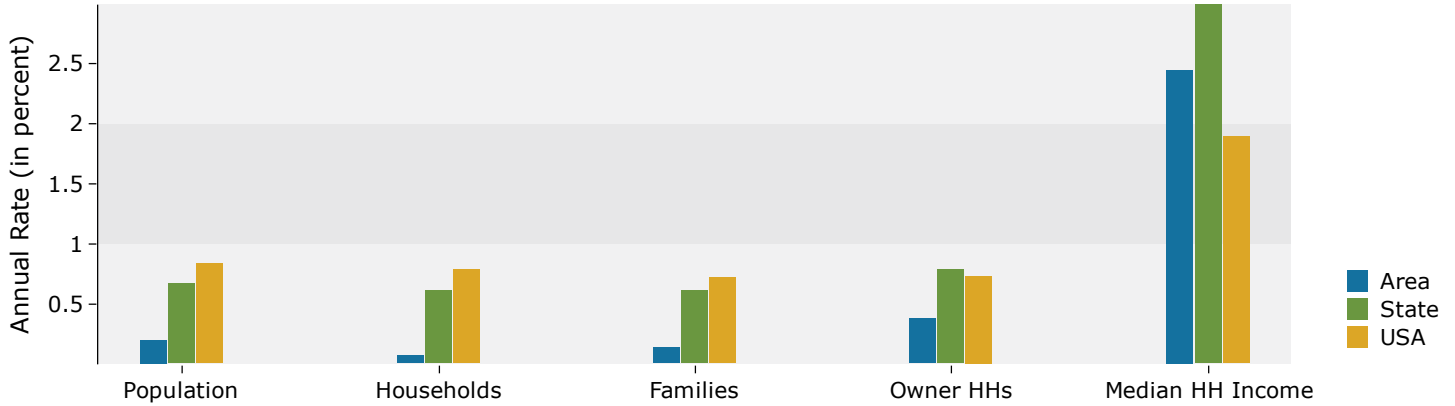
### 2019 Population by Race



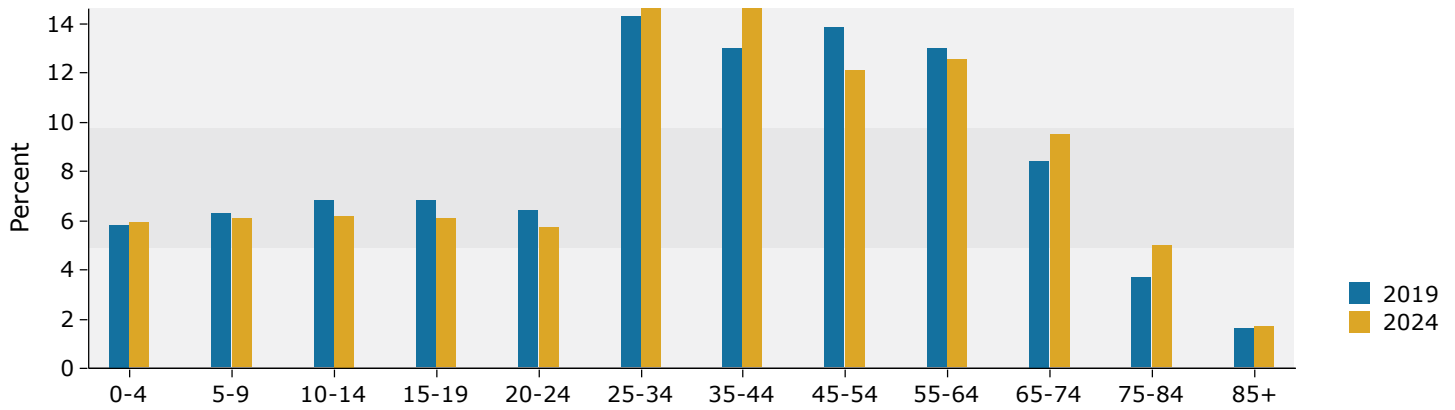
Source: U.S. Census Bureau, Census 2010 Summary File 1. Esri forecasts for 2019 and 2024.

## 3 miles

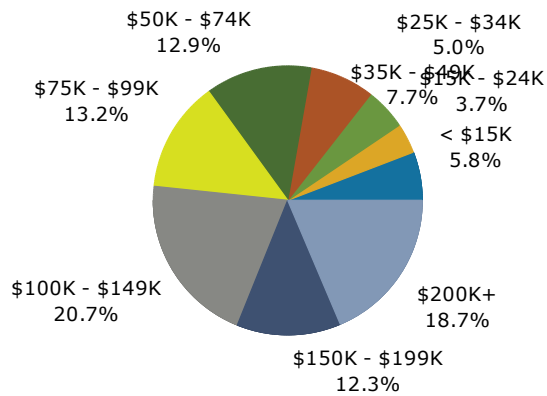
### Trends 2019-2024



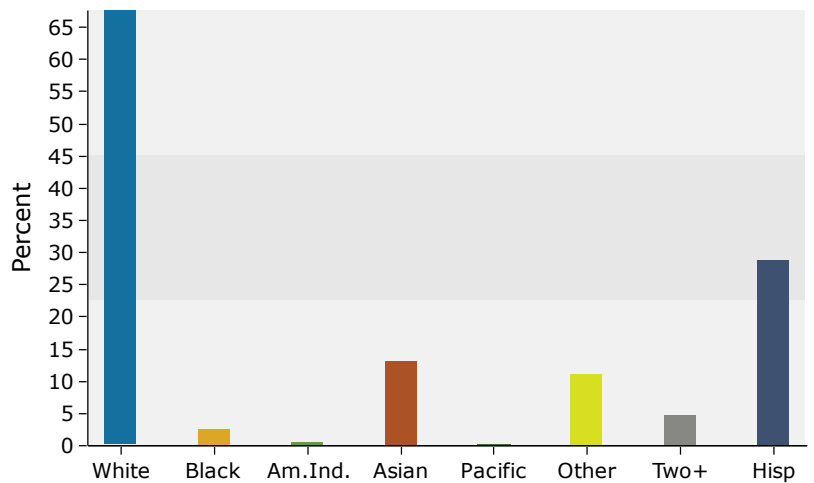
### Population by Age



### 2019 Household Income



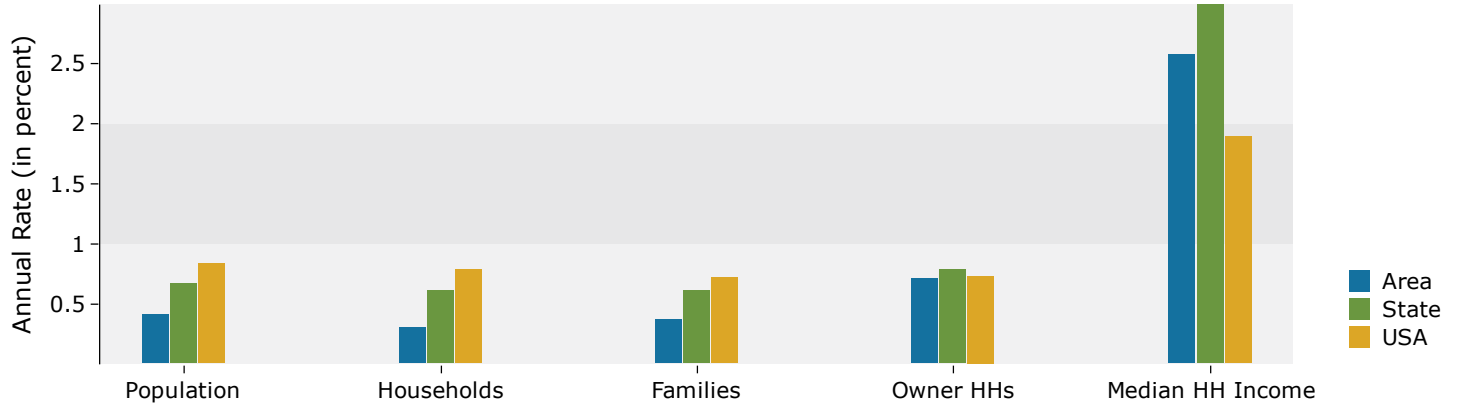
### 2019 Population by Race



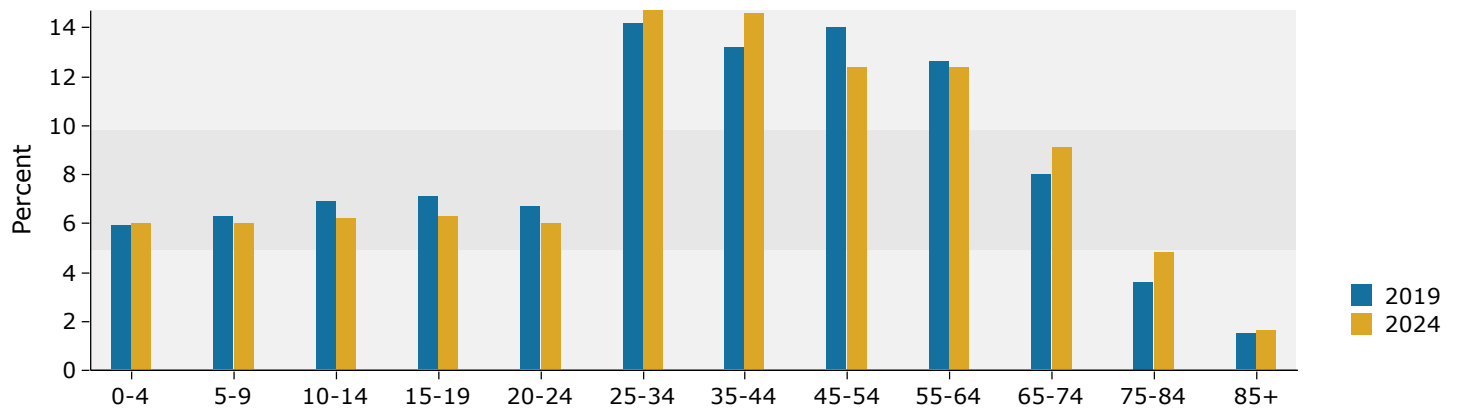
Source: U.S. Census Bureau, Census 2010 Summary File 1. Esri forecasts for 2019 and 2024.

## 5 miles

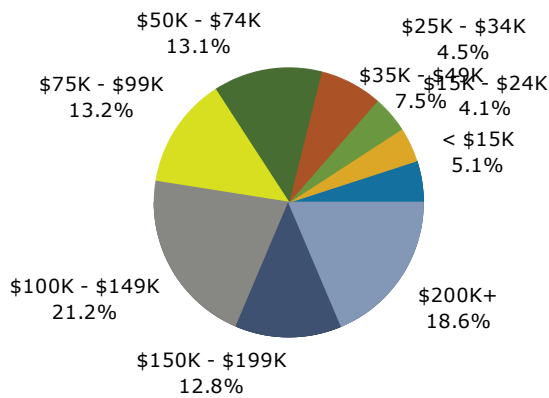
### Trends 2019-2024



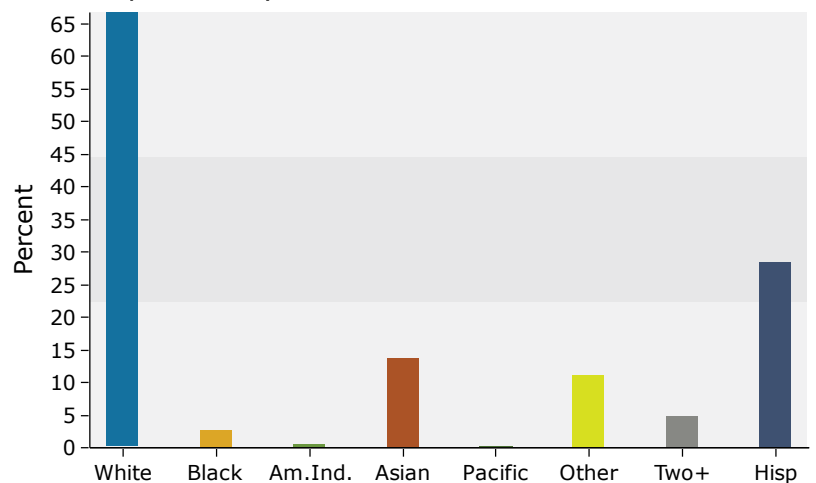
### Population by Age



### 2019 Household Income



### 2019 Population by Race



Source: U.S. Census Bureau, Census 2010 Summary File 1. Esri forecasts for 2019 and 2024.