



# Demographic and Income Comparison Profile

44670-Thomas Crossroads  
Rings: 1, 3, 5 mile radii

Prepared by Esri  
Latitude: 33.40940  
Longitude: -84.67940

	1 mile	3 miles	5 miles
<b>Census 2010 Summary</b>			
Population	3,217	20,821	56,951
Households	1,081	7,235	20,406
Families	887	5,896	15,810
Average Household Size	2.98	2.88	2.78
Owner Occupied Housing Units	955	6,428	15,942
Renter Occupied Housing Units	126	807	4,464
Median Age	39.0	39.2	37.3
<b>2019 Summary</b>			
Population	3,398	22,680	65,496
Households	1,149	7,907	23,440
Families	938	6,415	18,034
Average Household Size	2.96	2.87	2.79
Owner Occupied Housing Units	1,014	7,021	18,207
Renter Occupied Housing Units	135	886	5,233
Median Age	40.7	40.4	38.4
Median Household Income	\$86,174	\$89,075	\$85,092
Average Household Income	\$102,832	\$107,552	\$105,915
<b>2024 Summary</b>			
Population	3,533	24,040	71,117
Households	1,195	8,384	25,445
Families	974	6,792	19,499
Average Household Size	2.96	2.87	2.79
Owner Occupied Housing Units	1,063	7,501	19,849
Renter Occupied Housing Units	133	883	5,596
Median Age	41.1	40.8	38.5
Median Household Income	\$96,062	\$99,241	\$93,938
Average Household Income	\$114,414	\$118,895	\$117,782
<b>Trends: 2019-2024 Annual Rate</b>			
Population	0.78%	1.17%	1.66%
Households	0.79%	1.18%	1.66%
Families	0.76%	1.15%	1.57%
Owner Households	0.95%	1.33%	1.74%
Median Household Income	2.20%	2.18%	2.00%

Source: U.S. Census Bureau, Census 2010 Summary File 1. Esri forecasts for 2019 and 2024.



# Demographic and Income Comparison Profile

44670-Thomas Crossroads  
Rings: 1, 3, 5 mile radii

Prepared by Esri  
Latitude: 33.40940  
Longitude: -84.67940

2019 Households by Income	1 mile		3 miles		5 miles	
	Number	Percent	Number	Percent	Number	Percent
<\$15,000	32	2.8%	279	3.5%	1,209	5.2%
\$15,000 - \$24,999	46	4.0%	293	3.7%	977	4.2%
\$25,000 - \$34,999	50	4.4%	354	4.5%	1,242	5.3%
\$35,000 - \$49,999	113	9.8%	744	9.4%	2,024	8.6%
\$50,000 - \$74,999	235	20.5%	1,514	19.1%	4,468	19.1%
\$75,000 - \$99,999	189	16.4%	1,216	15.4%	3,755	16.0%
\$100,000 - \$149,999	252	21.9%	1,887	23.9%	4,971	21.2%
\$150,000 - \$199,999	172	15.0%	1,013	12.8%	2,833	12.1%
\$200,000+	61	5.3%	608	7.7%	1,959	8.4%
Median Household Income	\$86,174		\$89,075		\$85,092	
Average Household Income	\$102,832		\$107,552		\$105,915	
Per Capita Income	\$35,060		\$37,465		\$37,961	

2024 Households by Income	1 mile		3 miles		5 miles	
	Number	Percent	Number	Percent	Number	Percent
<\$15,000	23	1.9%	222	2.6%	1,044	4.1%
\$15,000 - \$24,999	39	3.3%	258	3.1%	889	3.5%
\$25,000 - \$34,999	43	3.6%	317	3.8%	1,129	4.4%
\$35,000 - \$49,999	101	8.5%	692	8.3%	1,950	7.7%
\$50,000 - \$74,999	225	18.8%	1,484	17.7%	4,476	17.6%
\$75,000 - \$99,999	191	16.0%	1,248	14.9%	4,011	15.8%
\$100,000 - \$149,999	287	24.0%	2,164	25.8%	5,876	23.1%
\$150,000 - \$199,999	216	18.1%	1,287	15.4%	3,682	14.5%
\$200,000+	72	6.0%	712	8.5%	2,389	9.4%
Median Household Income	\$96,062		\$99,241		\$93,938	
Average Household Income	\$114,414		\$118,895		\$117,782	
Per Capita Income	\$38,979		\$41,431		\$42,213	

**Data Note:** Income is expressed in current dollars.

**Source:** U.S. Census Bureau, Census 2010 Summary File 1. Esri forecasts for 2019 and 2024.



# Demographic and Income Comparison Profile

44670-Thomas Crossroads  
Rings: 1, 3, 5 mile radii

Prepared by Esri  
Latitude: 33.40940  
Longitude: -84.67940

2010 Population by Age	1 mile		3 miles		5 miles	
	Number	Percent	Number	Percent	Number	Percent
Age 0 - 4	189	5.9%	1,261	6.1%	3,915	6.9%
Age 5 - 9	222	6.9%	1,548	7.4%	4,581	8.0%
Age 10 - 14	296	9.2%	1,802	8.7%	4,754	8.3%
Age 15 - 19	273	8.5%	1,649	7.9%	4,126	7.2%
Age 20 - 24	159	4.9%	903	4.3%	2,550	4.5%
Age 25 - 34	317	9.9%	2,033	9.8%	6,483	11.4%
Age 35 - 44	493	15.3%	3,337	16.0%	9,533	16.7%
Age 45 - 54	601	18.7%	3,672	17.6%	9,135	16.0%
Age 55 - 64	403	12.5%	2,535	12.2%	6,294	11.1%
Age 65 - 74	183	5.7%	1,364	6.6%	3,447	6.1%
Age 75 - 84	63	2.0%	570	2.7%	1,579	2.8%
Age 85+	20	0.6%	148	0.7%	555	1.0%

2019 Population by Age	1 mile		3 miles		5 miles	
	Number	Percent	Number	Percent	Number	Percent
Age 0 - 4	183	5.4%	1,260	5.6%	4,126	6.3%
Age 5 - 9	208	6.1%	1,484	6.5%	4,603	7.0%
Age 10 - 14	255	7.5%	1,647	7.3%	4,848	7.4%
Age 15 - 19	235	6.9%	1,542	6.8%	4,375	6.7%
Age 20 - 24	182	5.4%	1,165	5.1%	3,382	5.2%
Age 25 - 34	402	11.8%	2,696	11.9%	8,329	12.7%
Age 35 - 44	437	12.9%	2,951	13.0%	9,135	13.9%
Age 45 - 54	529	15.6%	3,497	15.4%	9,642	14.7%
Age 55 - 64	545	16.0%	3,341	14.7%	8,622	13.2%
Age 65 - 74	302	8.9%	2,059	9.1%	5,505	8.4%
Age 75 - 84	93	2.7%	816	3.6%	2,209	3.4%
Age 85+	25	0.7%	221	1.0%	720	1.1%

2024 Population by Age	1 mile		3 miles		5 miles	
	Number	Percent	Number	Percent	Number	Percent
Age 0 - 4	192	5.4%	1,344	5.6%	4,579	6.4%
Age 5 - 9	212	6.0%	1,515	6.3%	4,850	6.8%
Age 10 - 14	253	7.2%	1,675	7.0%	5,014	7.1%
Age 15 - 19	234	6.6%	1,567	6.5%	4,522	6.4%
Age 20 - 24	153	4.3%	992	4.1%	3,262	4.6%
Age 25 - 34	438	12.4%	3,002	12.5%	9,630	13.5%
Age 35 - 44	484	13.7%	3,368	14.0%	10,492	14.8%
Age 45 - 54	464	13.1%	3,190	13.3%	9,079	12.8%
Age 55 - 64	548	15.5%	3,479	14.5%	9,199	12.9%
Age 65 - 74	382	10.8%	2,461	10.2%	6,553	9.2%
Age 75 - 84	144	4.1%	1,165	4.8%	3,087	4.3%
Age 85+	29	0.8%	281	1.2%	849	1.2%

Source: U.S. Census Bureau, Census 2010 Summary File 1. Esri forecasts for 2019 and 2024.



# Demographic and Income Comparison Profile

44670-Thomas Crossroads  
Rings: 1, 3, 5 mile radii

Prepared by Esri  
Latitude: 33.40940  
Longitude: -84.67940

2010 Race and Ethnicity	1 mile		3 miles		5 miles	
	Number	Percent	Number	Percent	Number	Percent
White Alone	2,689	83.6%	17,582	84.4%	45,484	79.9%
Black Alone	298	9.3%	1,924	9.2%	6,734	11.8%
American Indian Alone	15	0.5%	71	0.3%	158	0.3%
Asian Alone	50	1.6%	373	1.8%	1,921	3.4%
Pacific Islander Alone	0	0.0%	7	0.0%	45	0.1%
Some Other Race Alone	89	2.8%	438	2.1%	1,282	2.3%
Two or More Races	76	2.4%	426	2.0%	1,325	2.3%
Hispanic Origin (Any Race)	213	6.6%	1,263	6.1%	3,789	6.7%

2019 Race and Ethnicity	Number		Percent		Number		Percent	
	Number	Percent	Number	Percent	Number	Percent	Number	Percent
White Alone	2,767	81.5%	18,681	82.4%	49,918	76.2%		
Black Alone	342	10.1%	2,258	10.0%	8,572	13.1%		
American Indian Alone	17	0.5%	85	0.4%	199	0.3%		
Asian Alone	80	2.4%	618	2.7%	3,360	5.1%		
Pacific Islander Alone	0	0.0%	10	0.0%	73	0.1%		
Some Other Race Alone	98	2.9%	486	2.1%	1,552	2.4%		
Two or More Races	93	2.7%	542	2.4%	1,822	2.8%		
Hispanic Origin (Any Race)	241	7.1%	1,474	6.5%	4,756	7.3%		

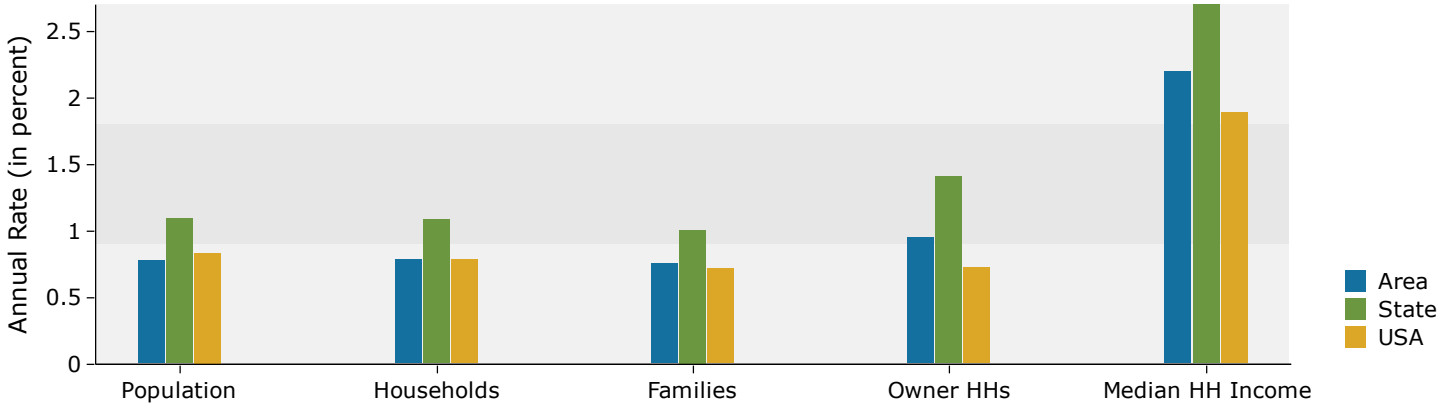
  

2024 Race and Ethnicity	Number		Percent		Number		Percent	
	Number	Percent	Number	Percent	Number	Percent	Number	Percent
White Alone	2,825	80.0%	19,457	80.9%	52,376	73.6%		
Black Alone	375	10.6%	2,511	10.4%	9,963	14.0%		
American Indian Alone	19	0.5%	97	0.4%	231	0.3%		
Asian Alone	104	2.9%	814	3.4%	4,519	6.4%		
Pacific Islander Alone	0	0.0%	13	0.1%	92	0.1%		
Some Other Race Alone	105	3.0%	526	2.2%	1,761	2.5%		
Two or More Races	105	3.0%	622	2.6%	2,174	3.1%		
Hispanic Origin (Any Race)	270	7.6%	1,696	7.1%	5,635	7.9%		

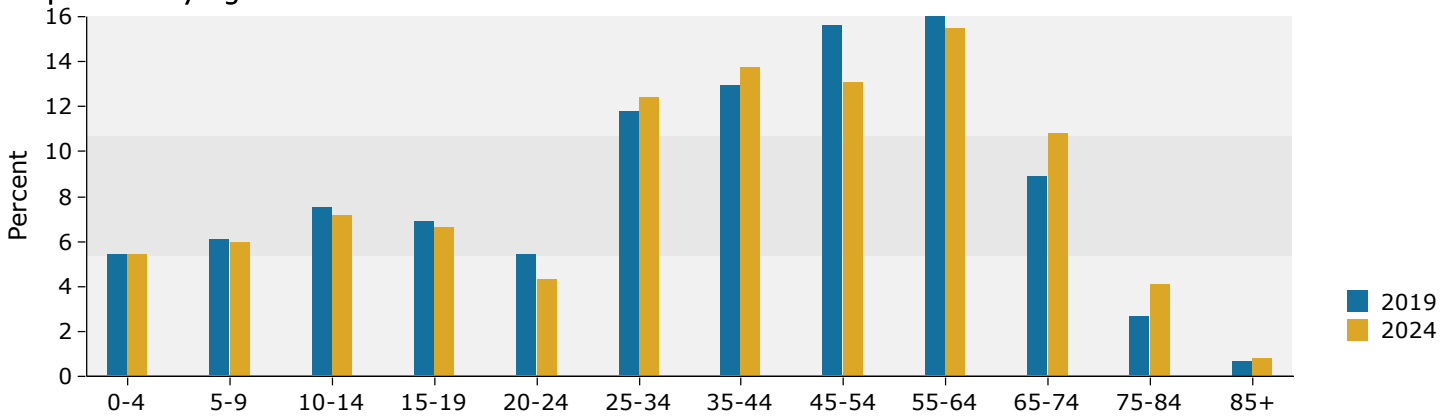
Source: U.S. Census Bureau, Census 2010 Summary File 1. Esri forecasts for 2019 and 2024.

## 1 mile

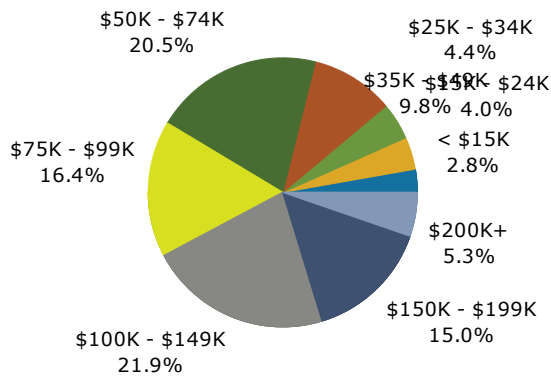
### Trends 2019-2024



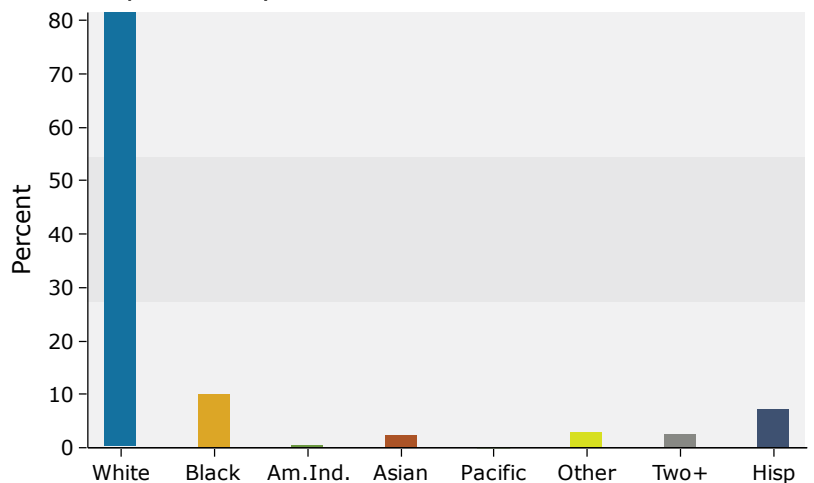
### Population by Age



### 2019 Household Income



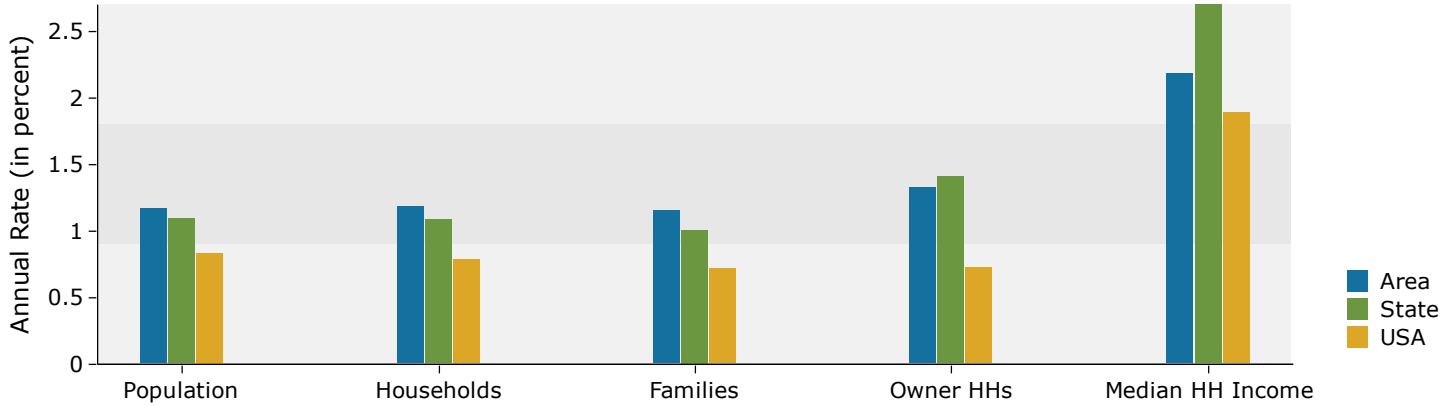
### 2019 Population by Race



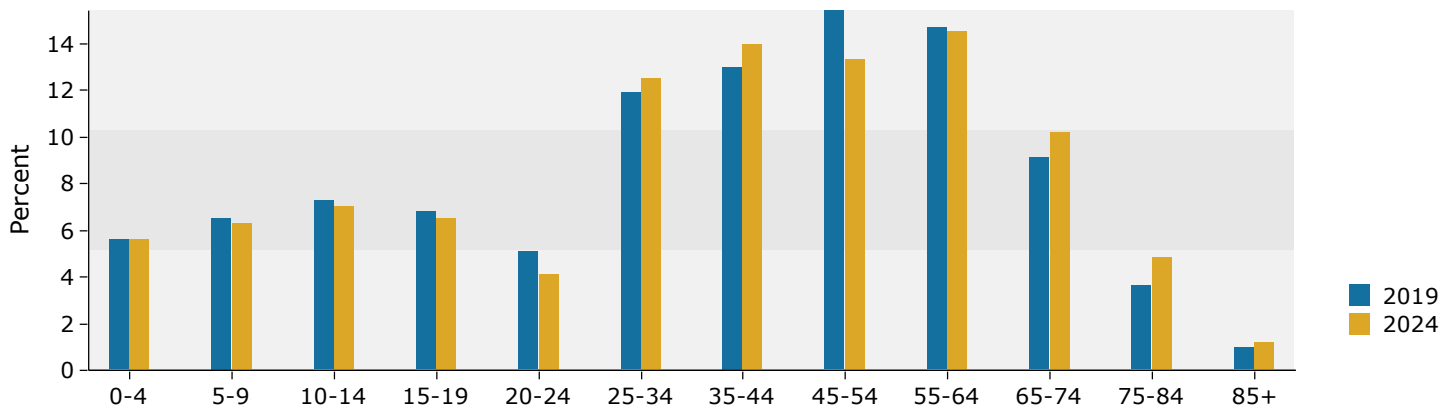
Source: U.S. Census Bureau, Census 2010 Summary File 1. Esri forecasts for 2019 and 2024.

## 3 miles

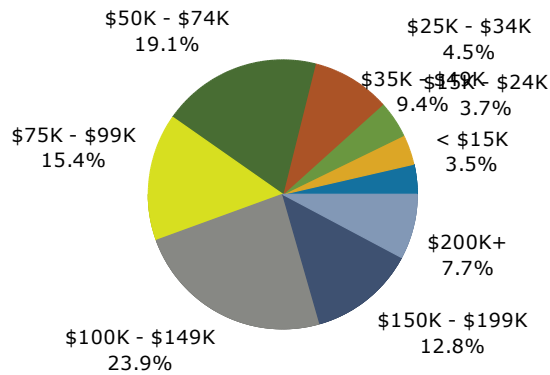
### Trends 2019-2024



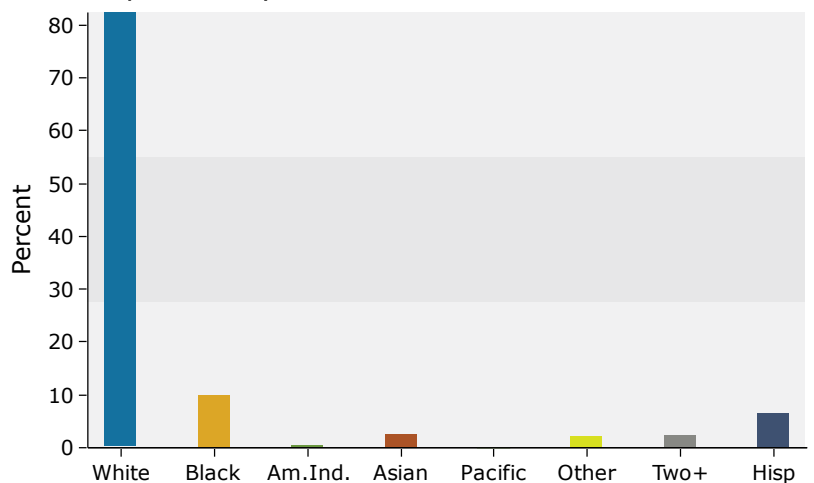
### Population by Age



### 2019 Household Income



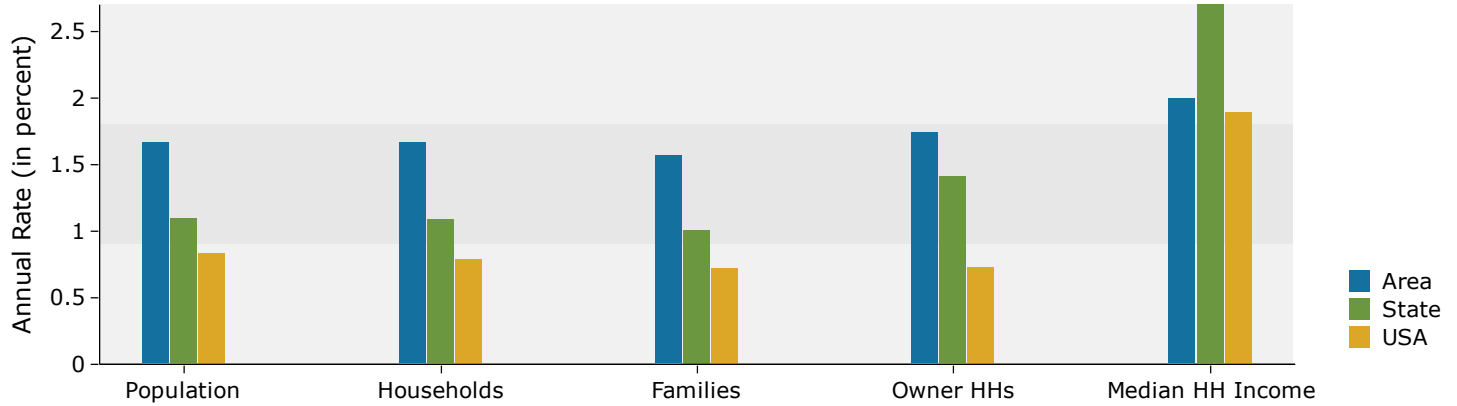
### 2019 Population by Race



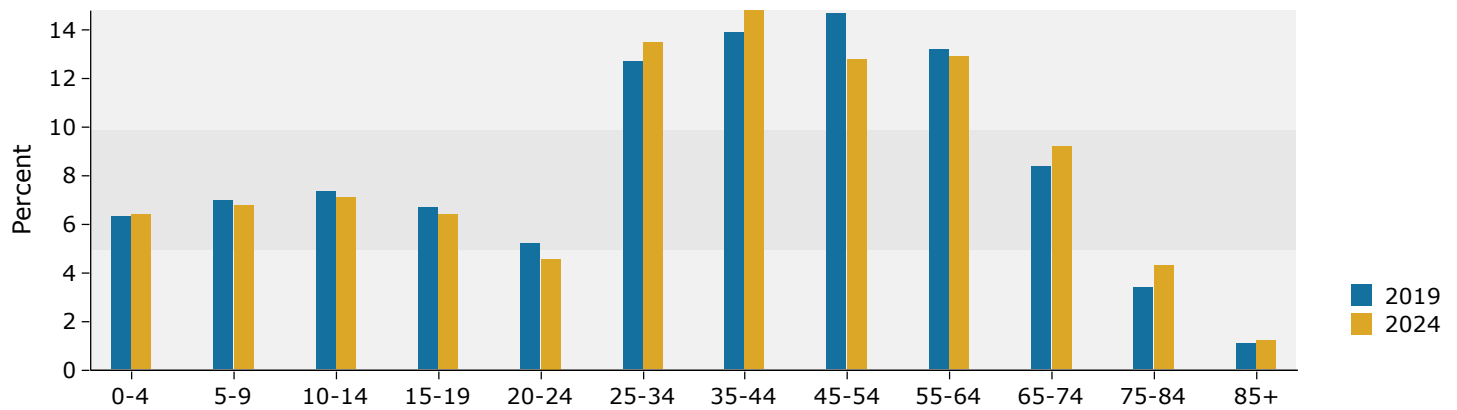
Source: U.S. Census Bureau, Census 2010 Summary File 1. Esri forecasts for 2019 and 2024.

## 5 miles

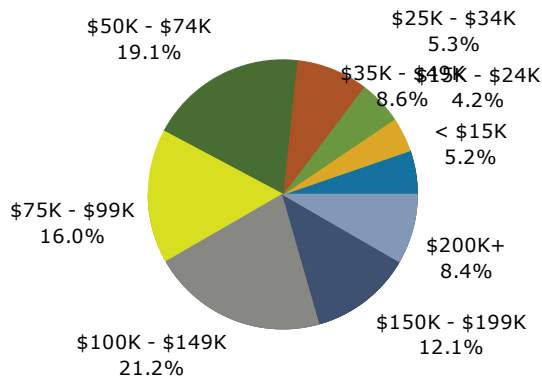
### Trends 2019-2024



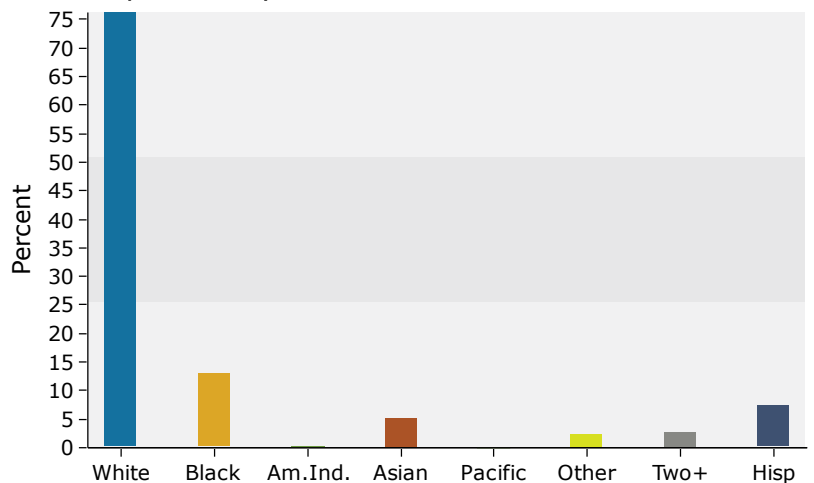
### Population by Age



### 2019 Household Income



### 2019 Population by Race



Source: U.S. Census Bureau, Census 2010 Summary File 1. Esri forecasts for 2019 and 2024.