



Demographic and Income Comparison Profile

44746-Windward Commons
Rings: 1, 3, 5 mile radii

Prepared by Esri
Latitude: 34.09497
Longitude: -84.27715

	1 mile	3 miles	5 miles
Census 2010 Summary			
Population	7,558	47,122	133,462
Households	3,212	18,931	49,158
Families	1,926	12,216	35,482
Average Household Size	2.35	2.49	2.71
Owner Occupied Housing Units	1,870	11,044	34,867
Renter Occupied Housing Units	1,342	7,887	14,291
Median Age	34.6	34.6	36.2
2019 Summary			
Population	8,847	59,536	161,670
Households	3,703	23,445	58,875
Families	2,221	15,292	42,472
Average Household Size	2.39	2.53	2.74
Owner Occupied Housing Units	2,199	13,451	40,860
Renter Occupied Housing Units	1,504	9,994	18,014
Median Age	36.9	36.1	37.3
Median Household Income	\$84,220	\$93,879	\$106,577
Average Household Income	\$106,944	\$126,040	\$143,114
2024 Summary			
Population	9,373	65,711	176,071
Households	3,906	25,689	63,796
Families	2,352	16,819	46,053
Average Household Size	2.40	2.55	2.76
Owner Occupied Housing Units	2,383	15,072	44,844
Renter Occupied Housing Units	1,523	10,617	18,952
Median Age	37.1	36.3	37.8
Median Household Income	\$93,468	\$104,557	\$116,541
Average Household Income	\$122,216	\$140,919	\$158,933
Trends: 2019-2024 Annual Rate			
Population	1.16%	1.99%	1.72%
Households	1.07%	1.84%	1.62%
Families	1.15%	1.92%	1.63%
Owner Households	1.62%	2.30%	1.88%
Median Household Income	2.11%	2.18%	1.80%

Source: U.S. Census Bureau, Census 2010 Summary File 1. Esri forecasts for 2019 and 2024.



Demographic and Income Comparison Profile

44746-Windward Commons
Rings: 1, 3, 5 mile radii

Prepared by Esri
Latitude: 34.09497
Longitude: -84.27715

2019 Households by Income	1 mile		3 miles		5 miles	
	Number	Percent	Number	Percent	Number	Percent
<\$15,000	127	3.4%	824	3.5%	1,918	3.3%
\$15,000 - \$24,999	193	5.2%	1,106	4.7%	2,483	4.2%
\$25,000 - \$34,999	163	4.4%	1,034	4.4%	2,439	4.1%
\$35,000 - \$49,999	297	8.0%	1,893	8.1%	4,080	6.9%
\$50,000 - \$74,999	780	21.1%	4,288	18.3%	9,021	15.3%
\$75,000 - \$99,999	651	17.6%	3,215	13.7%	7,219	12.3%
\$100,000 - \$149,999	801	21.6%	4,918	21.0%	11,977	20.3%
\$150,000 - \$199,999	328	8.9%	2,365	10.1%	7,113	12.1%
\$200,000+	362	9.8%	3,802	16.2%	12,624	21.4%
Median Household Income	\$84,220		\$93,879		\$106,577	
Average Household Income	\$106,944		\$126,040		\$143,114	
Per Capita Income	\$45,530		\$49,353		\$52,096	

2024 Households by Income	1 mile		3 miles		5 miles	
	Number	Percent	Number	Percent	Number	Percent
<\$15,000	112	2.9%	739	2.9%	1,676	2.6%
\$15,000 - \$24,999	179	4.6%	1,042	4.1%	2,295	3.6%
\$25,000 - \$34,999	146	3.7%	965	3.8%	2,217	3.5%
\$35,000 - \$49,999	274	7.0%	1,803	7.0%	3,855	6.0%
\$50,000 - \$74,999	733	18.8%	4,182	16.3%	8,739	13.7%
\$75,000 - \$99,999	643	16.5%	3,313	12.9%	7,350	11.5%
\$100,000 - \$149,999	894	22.9%	5,773	22.5%	13,410	21.0%
\$150,000 - \$199,999	439	11.2%	3,137	12.2%	8,934	14.0%
\$200,000+	486	12.4%	4,735	18.4%	15,320	24.0%
Median Household Income	\$93,468		\$104,557		\$116,541	
Average Household Income	\$122,216		\$140,919		\$158,933	
Per Capita Income	\$51,794		\$54,790		\$57,566	

Data Note: Income is expressed in current dollars.

Source: U.S. Census Bureau, Census 2010 Summary File 1. Esri forecasts for 2019 and 2024.



Demographic and Income Comparison Profile

44746-Windward Commons
Rings: 1, 3, 5 mile radii

Prepared by Esri
Latitude: 34.09497
Longitude: -84.27715

2010 Population by Age	1 mile		3 miles		5 miles	
	Number	Percent	Number	Percent	Number	Percent
Age 0 - 4	589	7.8%	3,542	7.5%	9,374	7.0%
Age 5 - 9	535	7.1%	3,562	7.6%	11,239	8.4%
Age 10 - 14	475	6.3%	3,540	7.5%	11,806	8.8%
Age 15 - 19	366	4.8%	2,784	5.9%	9,162	6.9%
Age 20 - 24	350	4.6%	2,222	4.7%	5,425	4.1%
Age 25 - 34	1,533	20.3%	8,299	17.6%	17,021	12.8%
Age 35 - 44	1,461	19.3%	8,761	18.6%	24,091	18.1%
Age 45 - 54	1,061	14.0%	7,241	15.4%	23,362	17.5%
Age 55 - 64	630	8.3%	4,079	8.7%	12,640	9.5%
Age 65 - 74	323	4.3%	1,854	3.9%	5,276	4.0%
Age 75 - 84	173	2.3%	919	2.0%	2,922	2.2%
Age 85+	62	0.8%	319	0.7%	1,144	0.9%

2019 Population by Age	1 mile		3 miles		5 miles	
	Number	Percent	Number	Percent	Number	Percent
Age 0 - 4	580	6.6%	4,001	6.7%	10,209	6.3%
Age 5 - 9	604	6.8%	4,308	7.2%	11,750	7.3%
Age 10 - 14	624	7.1%	4,505	7.6%	13,015	8.1%
Age 15 - 19	509	5.8%	3,772	6.3%	11,588	7.2%
Age 20 - 24	470	5.3%	3,176	5.3%	8,432	5.2%
Age 25 - 34	1,312	14.8%	8,861	14.9%	20,121	12.4%
Age 35 - 44	1,658	18.7%	10,142	17.0%	24,387	15.1%
Age 45 - 54	1,331	15.0%	8,831	14.8%	25,772	15.9%
Age 55 - 64	929	10.5%	6,607	11.1%	20,594	12.7%
Age 65 - 74	527	6.0%	3,529	5.9%	10,361	6.4%
Age 75 - 84	222	2.5%	1,346	2.3%	3,917	2.4%
Age 85+	81	0.9%	457	0.8%	1,523	0.9%

2024 Population by Age	1 mile		3 miles		5 miles	
	Number	Percent	Number	Percent	Number	Percent
Age 0 - 4	602	6.4%	4,482	6.8%	11,290	6.4%
Age 5 - 9	583	6.2%	4,559	6.9%	12,321	7.0%
Age 10 - 14	596	6.4%	4,624	7.0%	13,108	7.4%
Age 15 - 19	552	5.9%	4,154	6.3%	11,779	6.7%
Age 20 - 24	479	5.1%	3,209	4.9%	8,202	4.7%
Age 25 - 34	1,571	16.8%	10,449	15.9%	23,796	13.5%
Age 35 - 44	1,518	16.2%	10,745	16.4%	26,739	15.2%
Age 45 - 54	1,427	15.2%	9,200	14.0%	25,314	14.4%
Age 55 - 64	1,031	11.0%	7,351	11.2%	22,352	12.7%
Age 65 - 74	614	6.6%	4,433	6.7%	13,680	7.8%
Age 75 - 84	306	3.3%	1,954	3.0%	5,743	3.3%
Age 85+	95	1.0%	552	0.8%	1,746	1.0%

Source: U.S. Census Bureau, Census 2010 Summary File 1. Esri forecasts for 2019 and 2024.



Demographic and Income Comparison Profile

44746-Windward Commons
Rings: 1, 3, 5 mile radii

Prepared by Esri
Latitude: 34.09497
Longitude: -84.27715

2010 Race and Ethnicity	1 mile		3 miles		5 miles	
	Number	Percent	Number	Percent	Number	Percent
White Alone	4,632	61.3%	31,146	66.1%	94,636	70.9%
Black Alone	1,178	15.6%	5,916	12.6%	13,666	10.2%
American Indian Alone	17	0.2%	115	0.2%	308	0.2%
Asian Alone	1,273	16.8%	6,639	14.1%	16,917	12.7%
Pacific Islander Alone	4	0.1%	25	0.1%	61	0.0%
Some Other Race Alone	225	3.0%	1,960	4.2%	4,518	3.4%
Two or More Races	230	3.0%	1,322	2.8%	3,355	2.5%
Hispanic Origin (Any Race)	659	8.7%	5,133	10.9%	12,838	9.6%

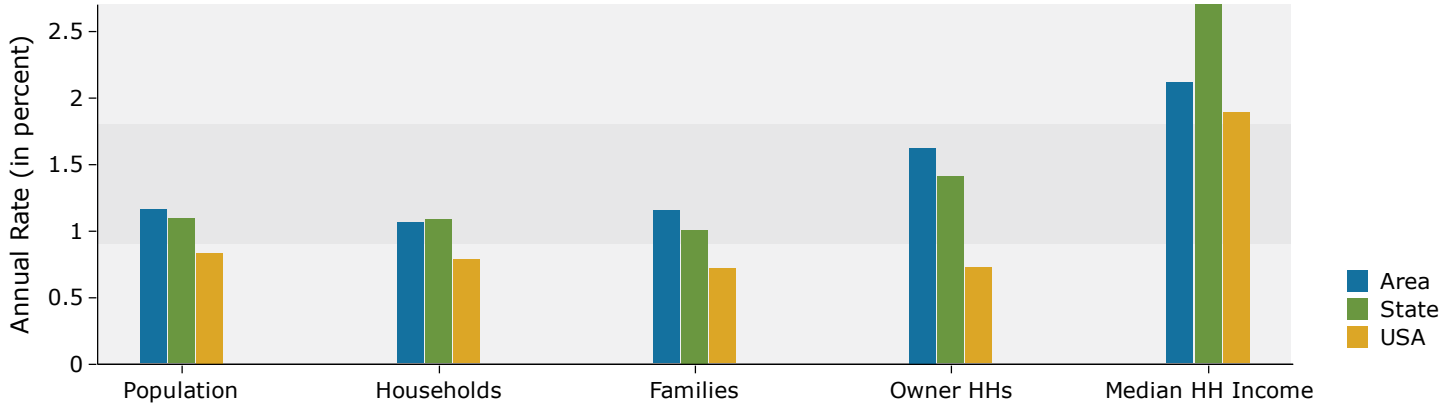
2019 Race and Ethnicity	1 mile		3 miles		5 miles	
	Number	Percent	Number	Percent	Number	Percent
White Alone	4,761	53.8%	36,300	61.0%	105,500	65.3%
Black Alone	1,447	16.4%	7,886	13.2%	18,173	11.2%
American Indian Alone	16	0.2%	142	0.2%	371	0.2%
Asian Alone	2,073	23.4%	10,671	17.9%	27,220	16.8%
Pacific Islander Alone	3	0.0%	23	0.0%	62	0.0%
Some Other Race Alone	234	2.6%	2,648	4.4%	5,591	3.5%
Two or More Races	312	3.5%	1,866	3.1%	4,754	2.9%
Hispanic Origin (Any Race)	681	7.7%	6,717	11.3%	15,423	9.5%

2024 Race and Ethnicity	1 mile		3 miles		5 miles	
	Number	Percent	Number	Percent	Number	Percent
White Alone	4,608	49.2%	37,933	57.7%	108,620	61.7%
Black Alone	1,501	16.0%	8,655	13.2%	20,039	11.4%
American Indian Alone	15	0.2%	158	0.2%	408	0.2%
Asian Alone	2,659	28.4%	13,641	20.8%	35,031	19.9%
Pacific Islander Alone	3	0.0%	23	0.0%	61	0.0%
Some Other Race Alone	232	2.5%	3,099	4.7%	6,291	3.6%
Two or More Races	355	3.8%	2,201	3.3%	5,620	3.2%
Hispanic Origin (Any Race)	676	7.2%	7,739	11.8%	17,134	9.7%

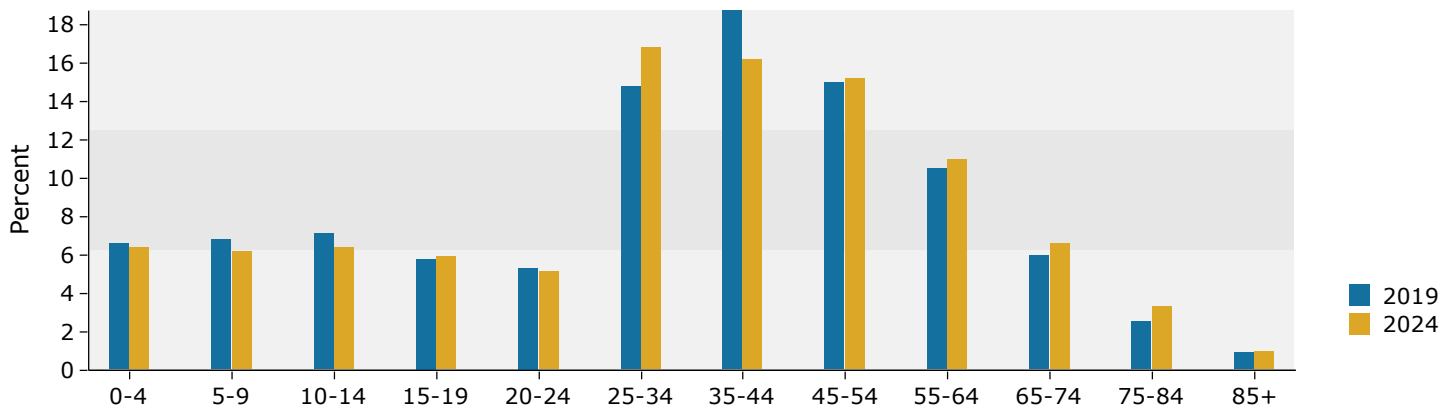
Source: U.S. Census Bureau, Census 2010 Summary File 1. Esri forecasts for 2019 and 2024.

1 mile

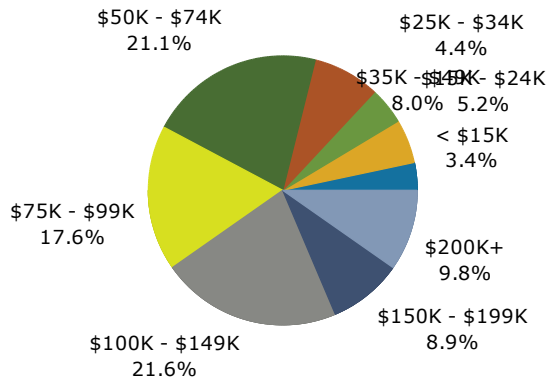
Trends 2019-2024



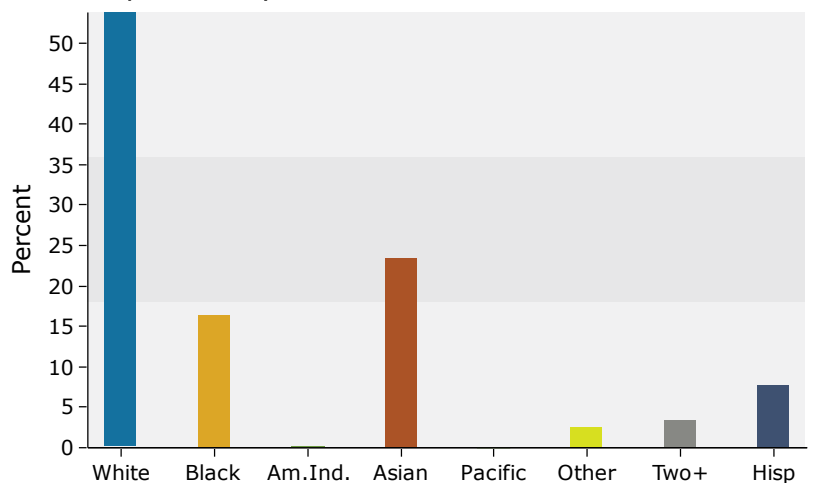
Population by Age



2019 Household Income



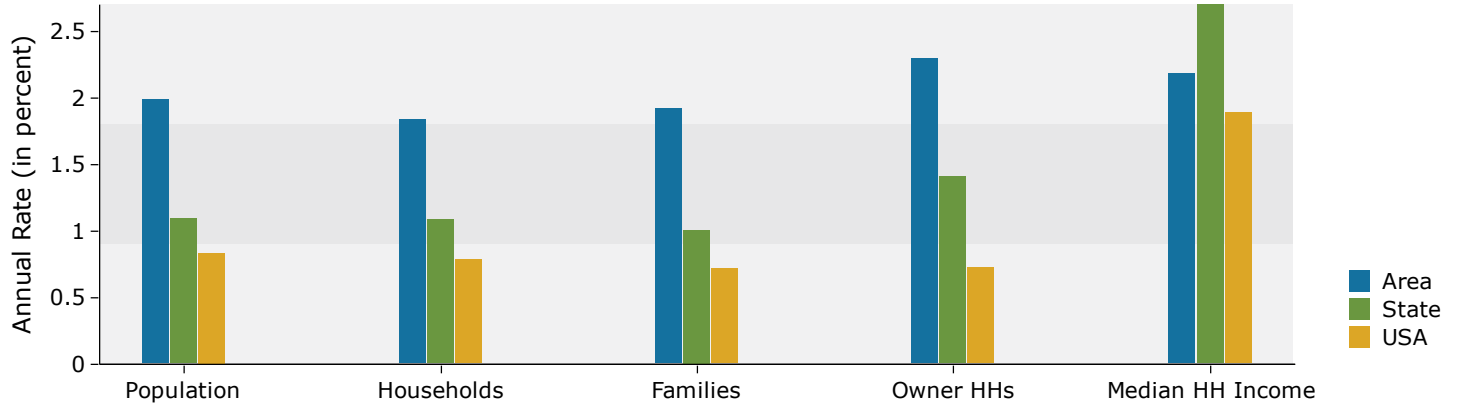
2019 Population by Race



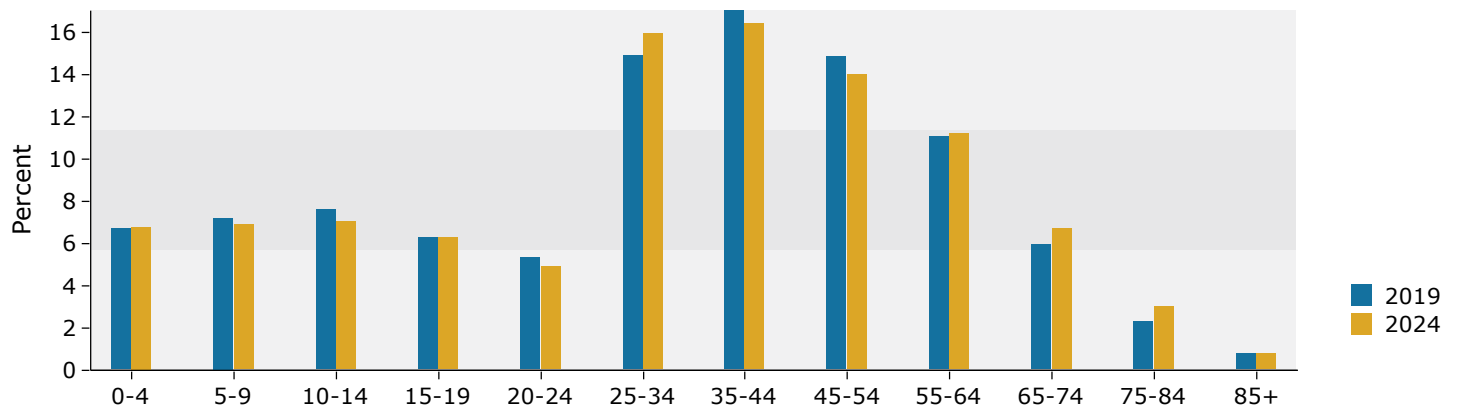
Source: U.S. Census Bureau, Census 2010 Summary File 1. Esri forecasts for 2019 and 2024.

3 miles

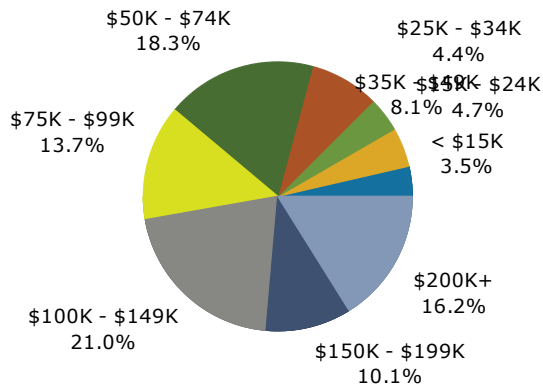
Trends 2019-2024



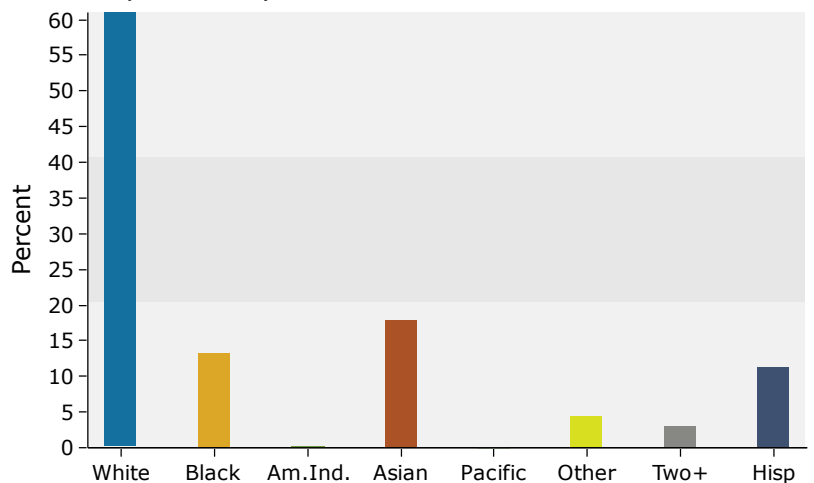
Population by Age



2019 Household Income



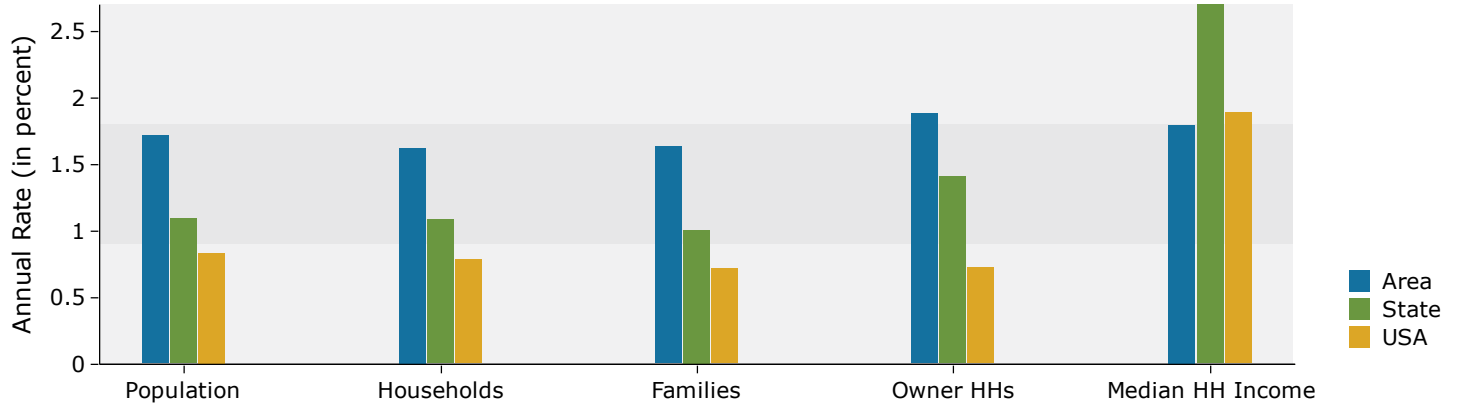
2019 Population by Race



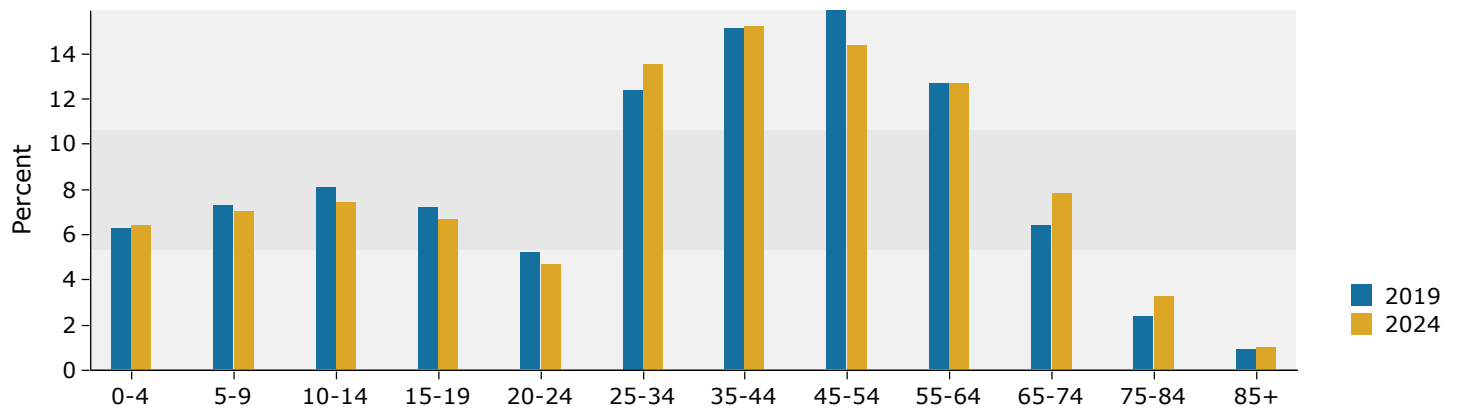
Source: U.S. Census Bureau, Census 2010 Summary File 1. Esri forecasts for 2019 and 2024.

5 miles

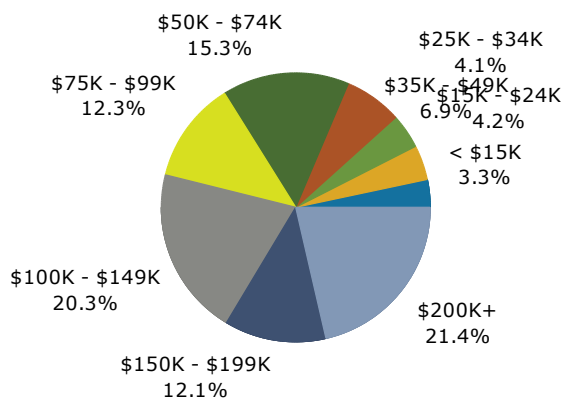
Trends 2019-2024



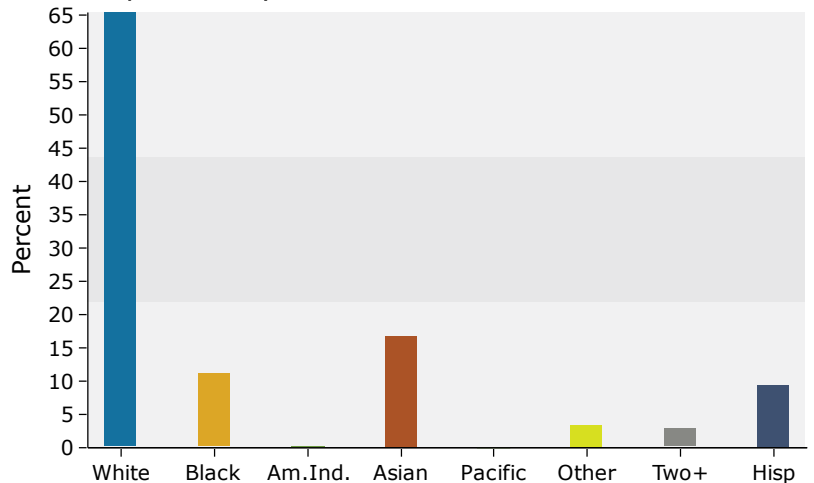
Population by Age



2019 Household Income



2019 Population by Race



Source: U.S. Census Bureau, Census 2010 Summary File 1. Esri forecasts for 2019 and 2024.